



M=1:1

## ***Athena 0942D***

On this data sheet you find any information with regard to our standard meshes.  
If you have further questions, please do not hesitate to contact us.



**ARGGER**



ARGGER

Athena 0942D

## Weave Spacing

### SPACE

- Partition
- Safety & Security
- Ceiling
- Interior Design
- Furniture
- Wall Covering

### APPLICATIONS

- Hotel
- Shopping center
- Office
- Concert hall
- Restaurant
- Family
- Recreation center
- School
- Theater
- Library
- Hospital

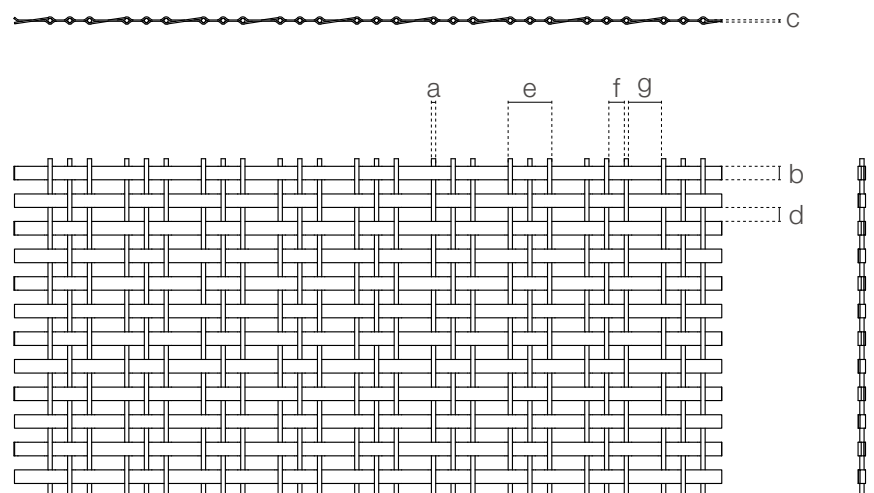
WEAVING INFINITE POSSIBILITIES

## ATHENA-0942D

Athena-0942D is woven by the intersection of bronze-colored stainless steel flat wire and triple-stranded round wire. The antique and delicate surface provides amazing visual appeal, which is very suitable for various interior decoration applications.

### SPECIFICATION

Material	SS304/SS316
Surface finish	Baking varnish and plating
Round wire diameter (a)	0.95 mm
Rope diameter (b)	4.2 mm
Round wire pitch (c)	1 mm
Rope pitch (d)	3 mm
Three-round-wire overall width (e)	8.6 mm
(f)	3 mm
(g)	7 mm
Open area	33.1%
Weight	2 kg/m <sup>2</sup>
Color	Natural colors, bronze, antique brass and brass



Architectural Art Metal Meshes Solution Designer



Argger Creative Weave Co., Ltd.

www.argger.com / support@argger.com / (86)-318-5111380