

M=1:1

Apollo 3513D

On this data sheet you find any information with regard to our standard meshes.
If you have further questions, please do not hesitate to contact us.



ARGGER



ARGGER

Apollo 3513D

Weave Close

SPACE

- Partition
- Elevator Cab
- Interior Design
- Furniture
- Wall Covering

APPLICATIONS

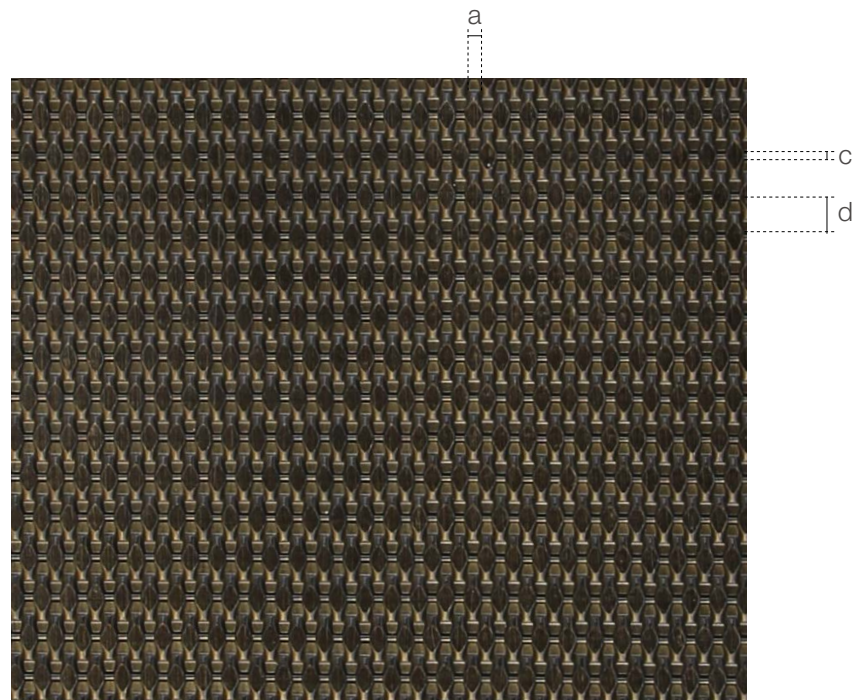
- Hotel
- Shopping center
- Office
- Concert hall
- Restaurant
- Family
- Recreation center
- School
- Theater
- Library
- Hospital

APOLLO-3513D

Apollo-3513D is a combination of flat top wire with a round wire. This opaque decorative antique brass wire mesh makes it classic and evocative. It is an ideal choice for indoor and outdoor decoration, such as architectural wall panels, elevator interior wall panels and partitions, etc.

SPECIFICATION

<i>Material</i>	SS304/SS316
<i>Surface finish</i>	Baking varnish and plating
<i>Flat wire width (a)</i>	3.5 mm
<i>Flat wire thickness (b)</i>	1.8 mm
<i>Round wire diameter (c)</i>	1.3 mm
<i>Round wire aperture (d)</i>	7.2 mm
<i>Open area</i>	0%
<i>Color</i>	Natural colors, bronze, antique brass and brass



Architectural Art Metal Meshes Solution Designer