

M=1:1

Apollo 3060D

On this data sheet you find any information with regard to our standard meshes.
If you have further questions, please do not hesitate to contact us.



ARGGER



ARGGER

Apollo 3060D

Weave Close

SPACE

- Partition
- Elevator Cab
- Interior Design
- Furniture
- Wall Covering

APPLICATIONS

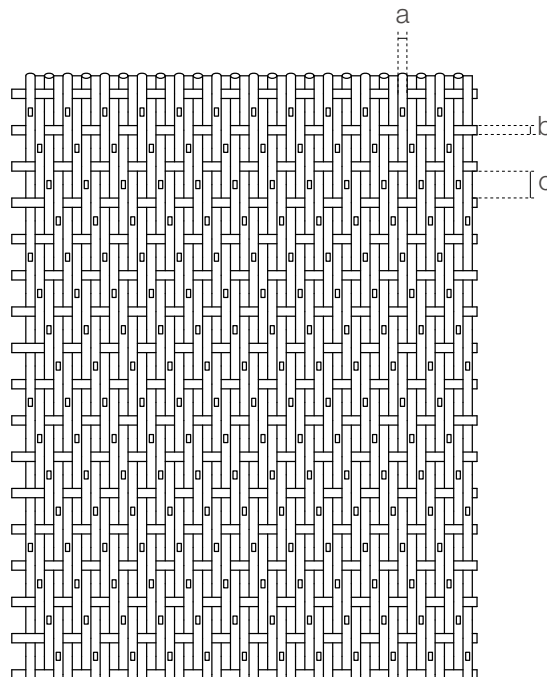
- Hotel
- Shopping center
- Office
- Concert hall
- Restaurant
- Family
- Recreation center
- School
- Theater
- Library
- Hospital

APOLLO-3060D

Apollo-3060D is a stainless steel architectural mesh that is tightly woven with vertical round wires and horizontal cross rods. The unique eye-catching appearance and opaque solid structure are very suitable for interior decoration purposes such as wall panels and partitions.

SPECIFICATION

<i>Material</i>	SS304/SS316
<i>Surface finish</i>	Baking varnish and plating
<i>Round wire diameter (a)</i>	3 mm
<i>Cross rod diameter (b)</i>	3 mm
<i>Cross rod pitch (c)</i>	8.7 mm
<i>Open area</i>	0%
<i>Weight</i>	24.1 kg/m ²
<i>Color</i>	Natural colors, bronze, antique brass and brass 



Architectural Art Metal Meshes Solution Designer



Argger Creative Weave Co., Ltd.

www.argger.com / support@argger.com / (86)-318-5111380