

M=1:1

Apollo 3030D

On this data sheet you find any information with regard to our standard meshes.
If you have further questions, please do not hesitate to contact us.



ARGGER



ARGGER

Apollo 3030D

Weave Close

SPACE

- Partition
- Elevator Cab
- Interior Design
- Furniture
- Wall Covering

APPLICATIONS

- Hotel
- Shopping center
- Office
- Concert hall
- Restaurant
- Family
- Recreation center
- School
- Theater
- Library
- Hospital

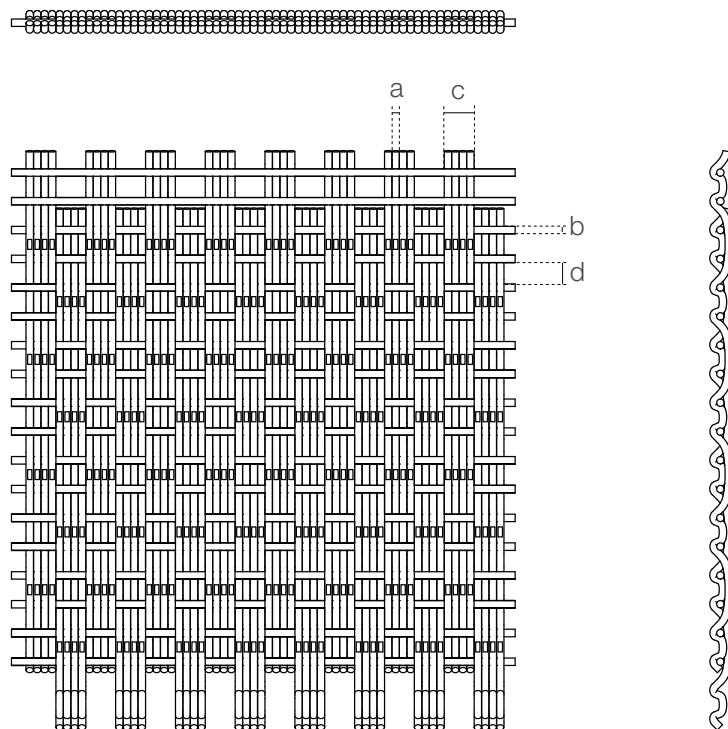
WEAVING INFINITE POSSIBILITIES 

APOLLO-3030D

Apollo-3030D Weave 4 side-by-side round wires with grooves on the top of the horizontal string to form a non-porous structure of architectural decorative mesh. It is widely used in applications such as partitions, elevator wall panels and indoor wall panels.

SPECIFICATION

<i>Material</i>	SS304/SS316
<i>Surface finish</i>	Baking varnish and plating
<i>Four-round-wire diameter (a)</i>	3 mm
<i>Cross rod diameter (b)</i>	3 mm
<i>Four-round-wire overall width (c)</i>	12 mm
<i>Cross rod pitch (d)</i>	8.6 mm
<i>Open area</i>	0%
<i>Weight</i>	24.3 kg/m ²
<i>Color</i>	Natural colors, bronze, antique brass and brass 



Architectural Art Metal Meshes Solution Designer



Argger Creative Weave Co., Ltd.

www.argger.com / support@argger.com / (86)-318-5111380