

M=1:1

Apollo 3012D

On this data sheet you find any information with regard to our standard meshes.
If you have further questions, please do not hesitate to contact us.



ARGGER



ARGGER

Apollo 3012D

Weave Close

SPACE

- Partition
- Elevator Cab
- Interior Design
- Furniture
- Wall Covering

APPLICATIONS

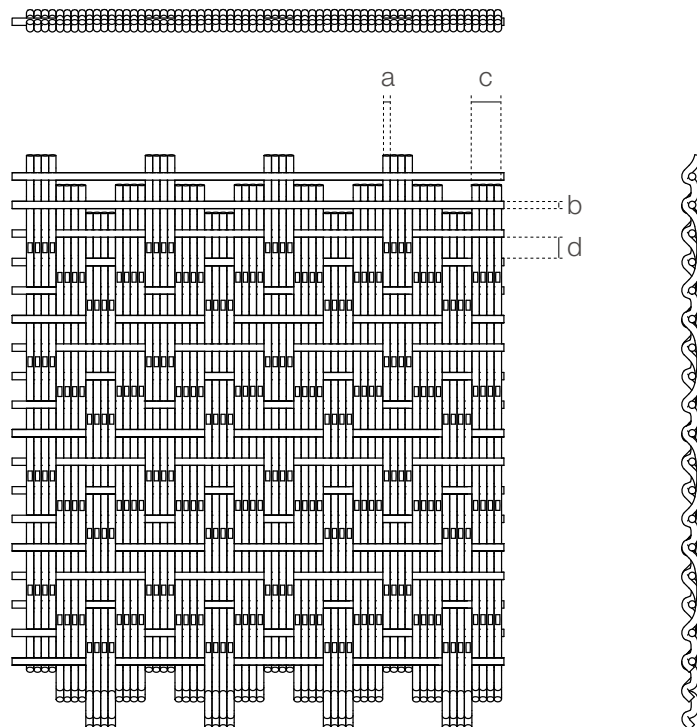
- Hotel
- Shopping center
- Office
- Concert hall
- Restaurant
- Family
- Recreation center
- School
- Theater
- Library
- Hospital

APOLLO-3012D

Apollo-3012D combines four side-by-side vertical round wires and horizontal strings to form multiple chevron patterns. Rigid and durable structure is much popular in designs.

SPECIFICATION

<i>Material</i>	SS304/SS316
<i>Surface finish</i>	Baking varnish and plating
<i>Four-round-wire diameter (a)</i>	3 mm
<i>Cross rod diameter (b)</i>	3 mm
<i>Four-round-wire overall width (c)</i>	12 mm
<i>Cross rod pitch (d)</i>	8.6 mm
<i>Open area</i>	0%
<i>Weight</i>	24.3 kg/m ²
<i>Color</i>	Natural colors, bronze, antique brass and brass 



Architectural Art Metal Meshes Solution Designer



Argger Creative Weave Co., Ltd.

www.argger.com / support@argger.com / (86)-318-5111380