

M=1:1

Apollo 1520D

On this data sheet you find any information with regard to our standard meshes.
If you have further questions, please do not hesitate to contact us.



ARGGER



ARGGER

Apollo 1520D

Weave Close

SPACE

- Partition
- Elevator Cab
- Interior Design
- Furniture
- Wall Covering

APPLICATIONS

- Hotel
- Shopping center
- Office
- Concert hall
- Restaurant
- Family
- Recreation center
- School
- Theater
- Library
- Hospital

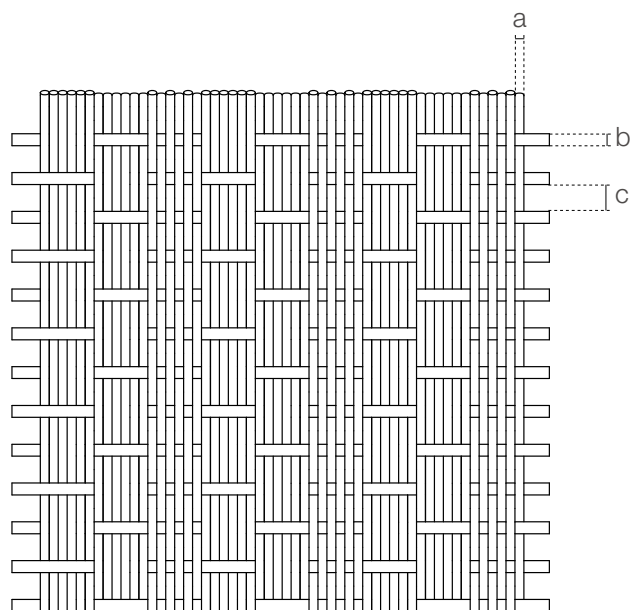
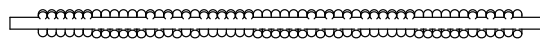
WEAVING INFINITE POSSIBILITIES

APOLLO-1520D

Apollo-1520D is an opaque woven architectural mesh with different horizontal and vertical patterns. Its modern appearance with complex patterns can bring a unique visual texture.

SPECIFICATION

Material	SS304/SS316
Surface finish	Baking varnish and plating
Round wire diameter (a)	1.5 mm
Cross wire diameter (b)	2 mm
Cross wire pitch (c)	6.2 mm
Open area	0%
Weight	14 kg/m ²
Color	Natural colors, bronze, antique brass and brass



Architectural Art Metal Meshes Solution Designer



Argger Creative Weave Co., Ltd.

www.argger.com / support@argger.com / (86)-318-5111380