

M=1:1

# ***Apollo 1230D***

On this data sheet you find any information with regard to our standard meshes.  
If you have further questions, please do not hesitate to contact us.



**ARGGER**



**ARGGER**

**Apollo 1230D**

**Weave Close**

**SPACE**

- Partition
- Elevator Cab
- Interior Design
- Furniture
- Wall Covering

**APPLICATIONS**

- Hotel
- Shopping center
- Office
- Concert hall
- Restaurant
- Family
- Recreation center
- School
- Theater
- Library
- Hospital

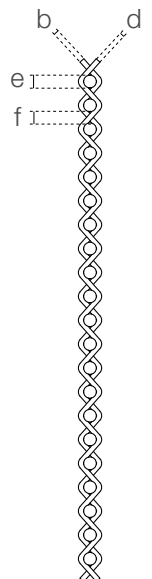
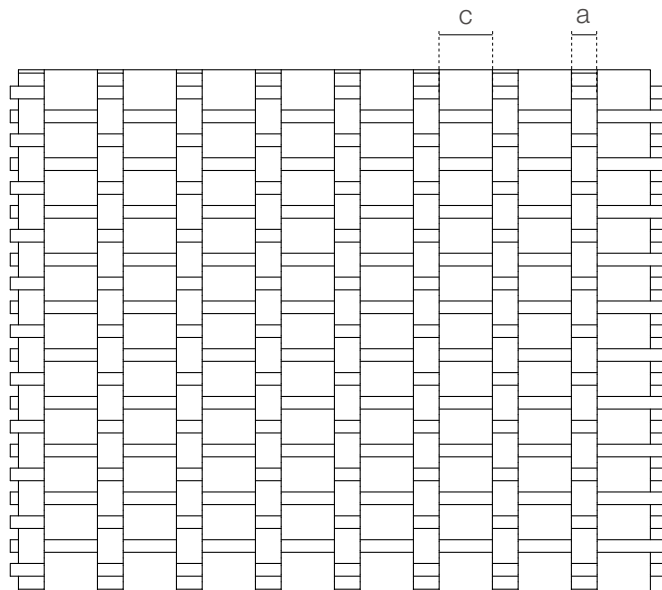
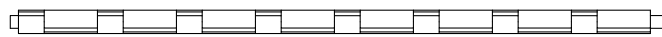
**WEAVING INFINITE POSSIBILITIES**

**APOLLO-1230D**

Apollo-1230D is a non-porous stainless steel decorative mesh made of large and small flat wires alternately crimped on round stainless steel strings. It is suitable for partitions, elevator wall panels and indoor wall coverings.

**SPECIFICATION**

<i>Material</i>	SS304/SS316
<i>Surface finish</i>	Baking varnish and plating
<i>Small flat wire width (a)</i>	6.1 mm
<i>Small flat wire thickness (b)</i>	1.2 mm
<i>Large flat wire width (c)</i>	12.6 mm
<i>Large flat wire thickness (d)</i>	1.2 mm
<i>Small flat wire thickness (e)</i>	1.2 mm
<i>Cross rod diameter (f)</i>	3 mm
<i>Cross rod pitch (g)</i>	2.65 mm
<i>Open area</i>	0%
<i>Weight</i>	21.1 kg/m <sup>2</sup>
<i>Color</i>	Natural colors, bronze, antique brass and brass.



Architectural Art Metal Meshes Solution Designer



**Argger Creative Weave Co., Ltd.**

www.argger.com / support@argger.com / (86)-318-5111380