

# ARGGER MUSES



## DESIGN

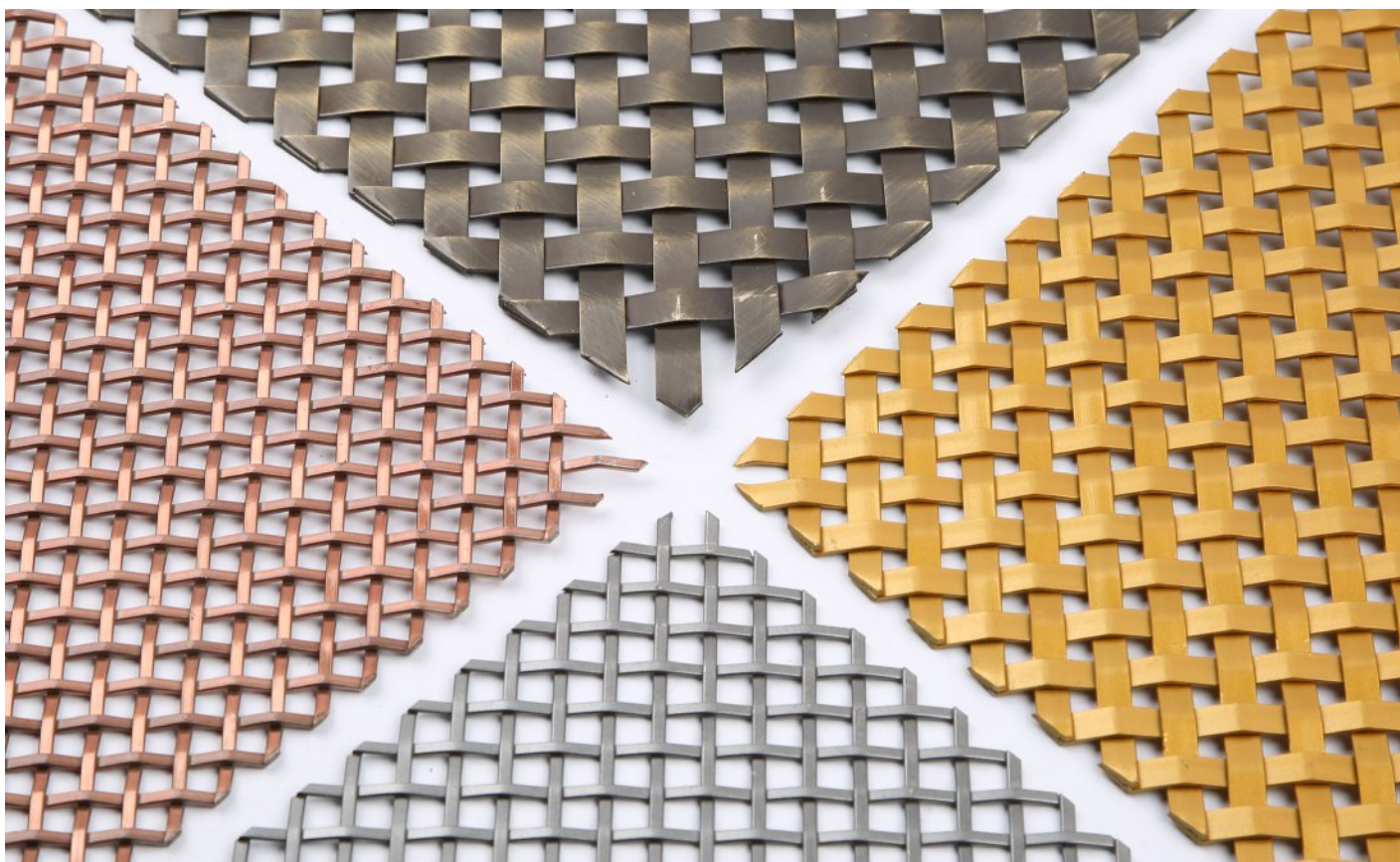
Understand your ideas.  
Exceptional performance inspires more..

## SOLVE

Seek the best solution.  
Draw bridge to the future projects.

## SERVICE

Provide all-around services.  
Make your ideas come into reality.

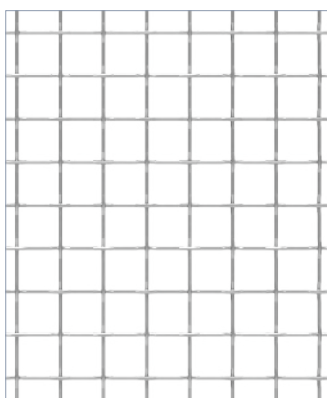


# ARGGER *Muses*

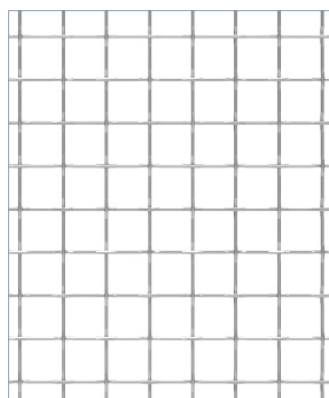
Our Muses series architectural meshes have crimped and rigid structures, which can be used for both exterior and interior projects. Stainless steel, copper, brass and other materials can satisfy most of applications. Different finishes supply modern, antique and other striking visual enjoyment.



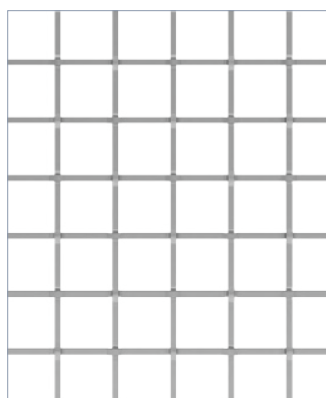
20% to 75% open areas make it be used in multiple applications, including facades, security screens, partitions, wall coverings, elevator cabs and other decorations.



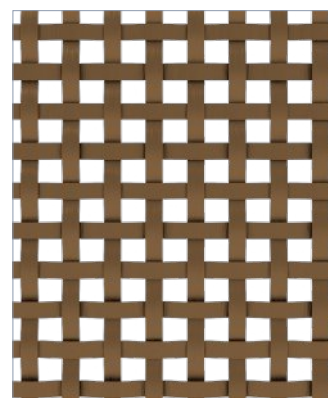
Muses 2726



Muses-3020



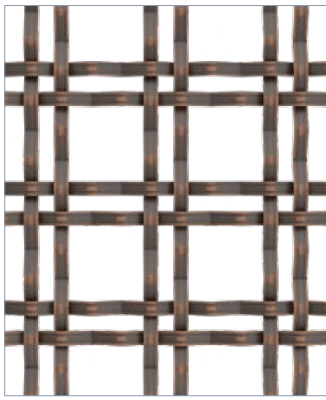
Muses-3227



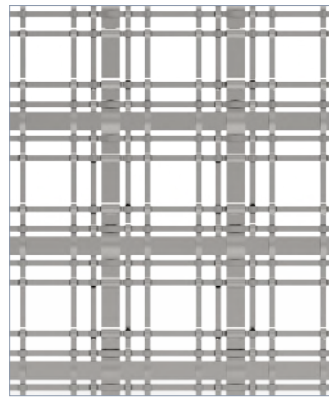
Muses-1724



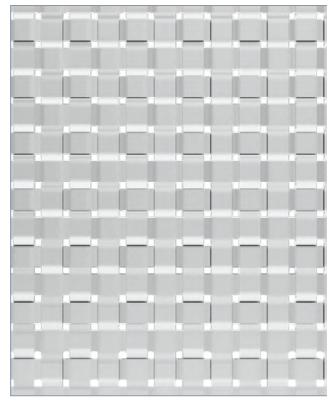




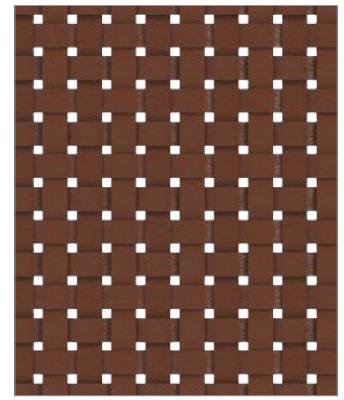
Muses-5025



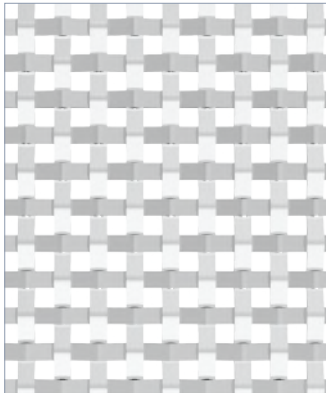
Muses-1240D



Muses-7221-S



Muses-7221-C



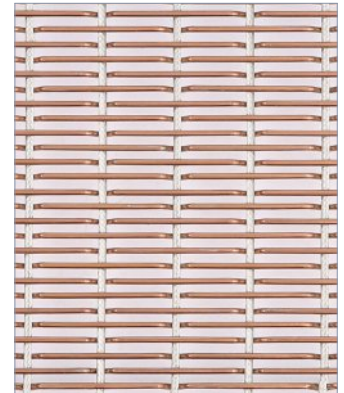
Muses-3134



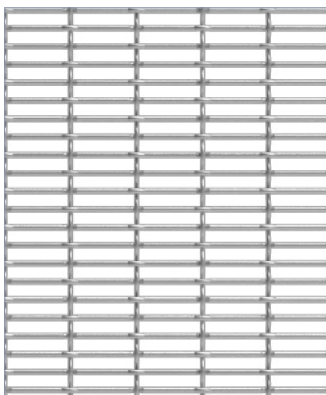
Muses-2314D



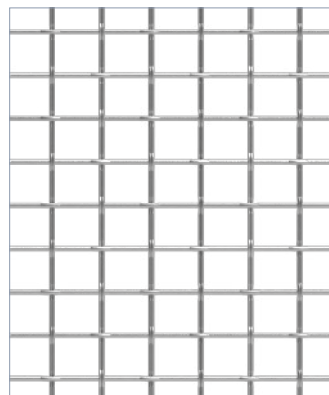
Muses-1621D



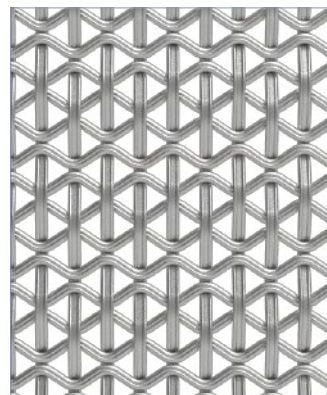
Muses-1519D



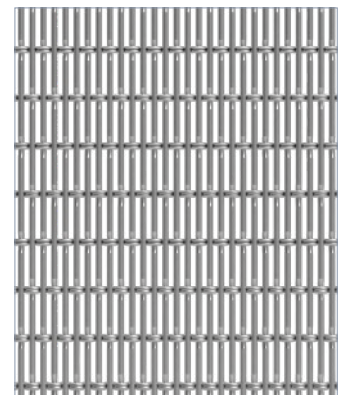
Muses-2015D



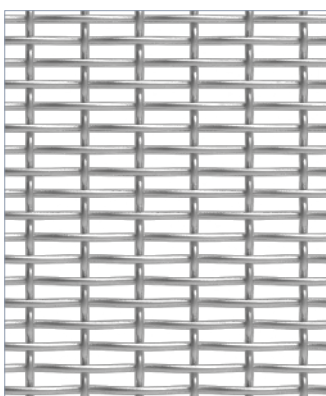
Muses-2011D



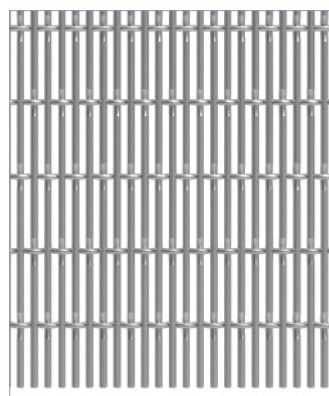
Muses-2023D



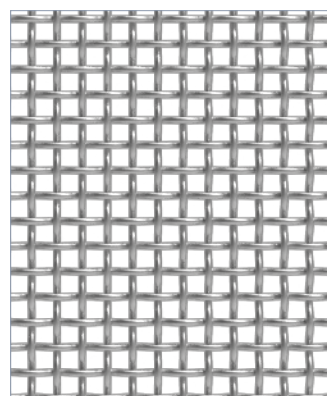
Muses-1220D



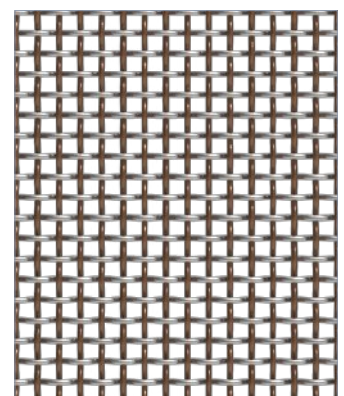
Muses-1585



Muses-1520D

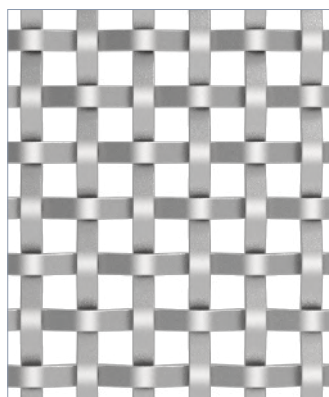


Muses-2045

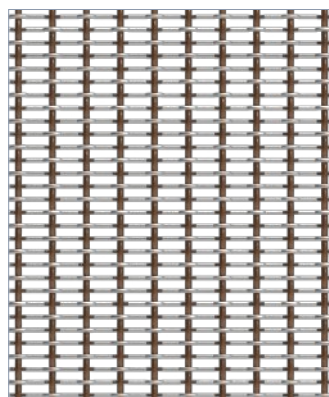


Muses-1535

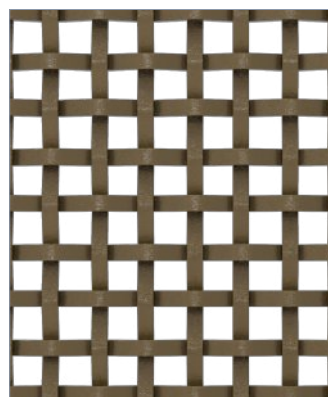




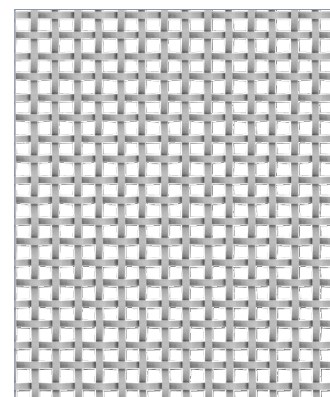
Muses-2236



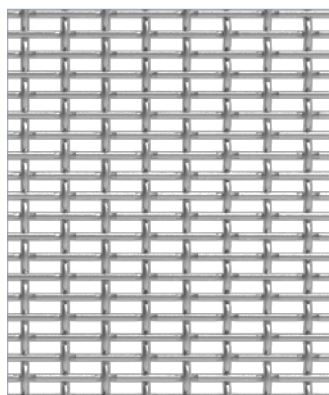
Muses-1015D



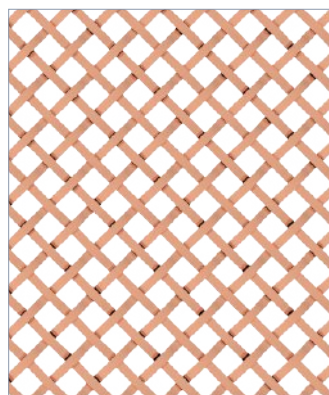
Muses-2035-BZ



Muses-2035-S



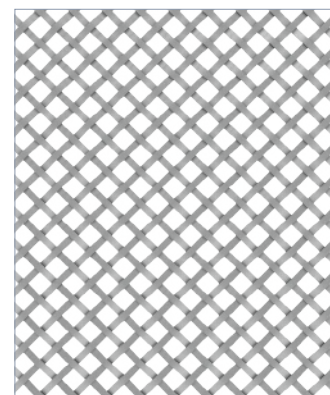
Muses-1040



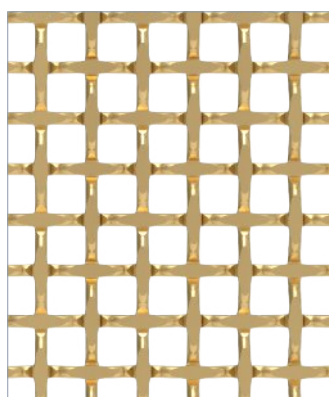
Muses-3070



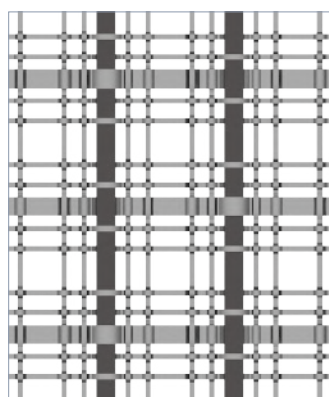
Muses-10070



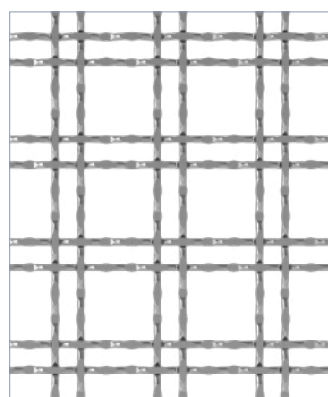
Muses-3270



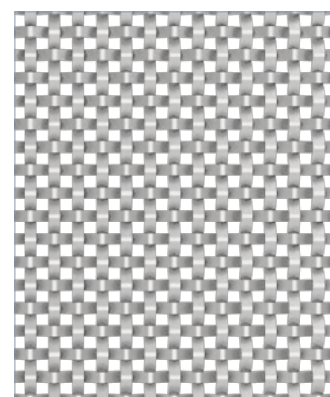
Muses-3088



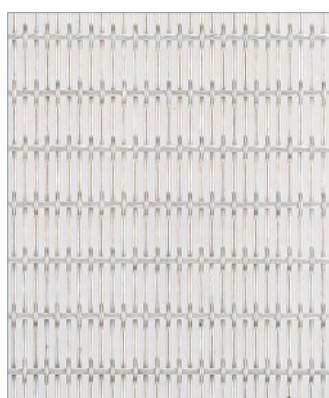
Muses-31100D



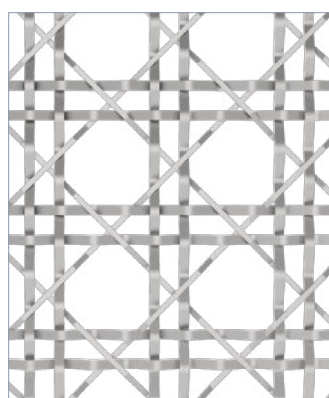
Muses-3033



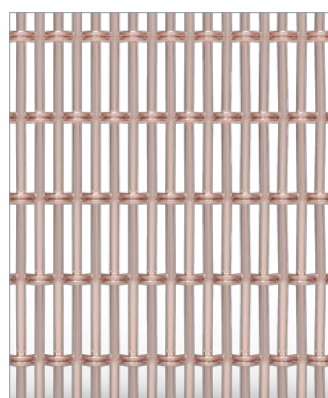
Muses-2528



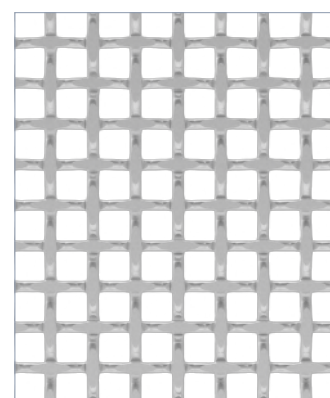
Muses-15R20D



Muses-2140D



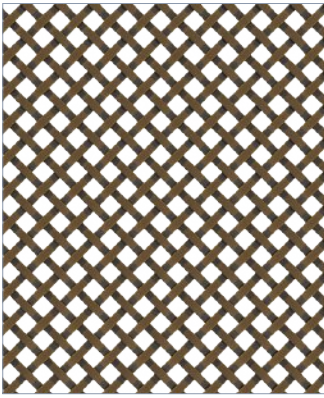
Muses-1120D



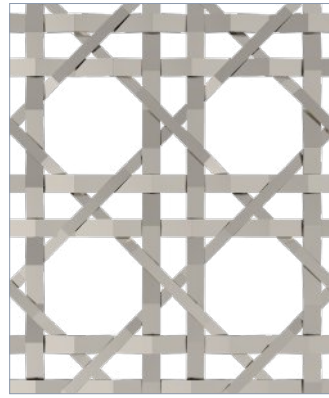
Muses-0388



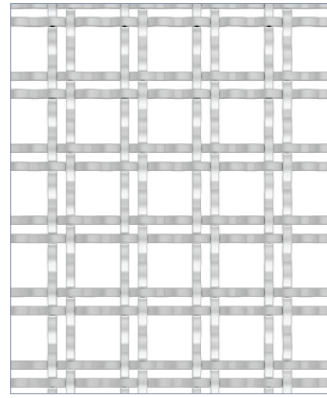




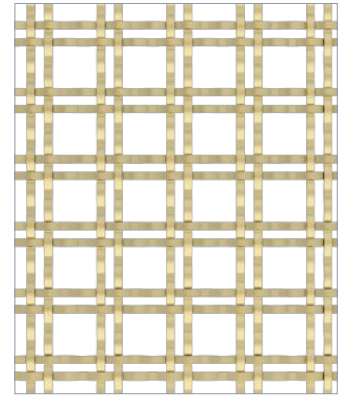
Muses-3865



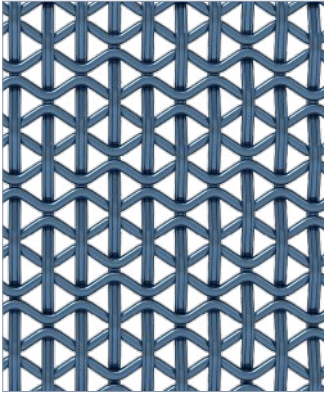
Muses-1118D



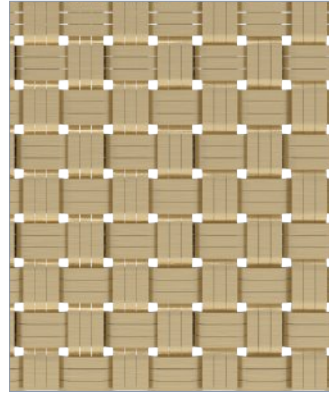
Muses-3230-S



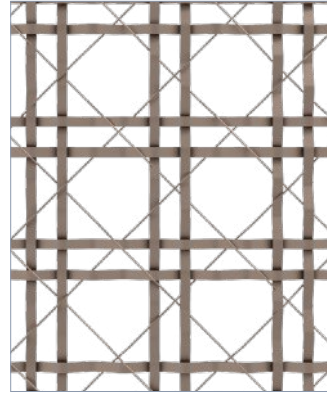
Muses-3230-B



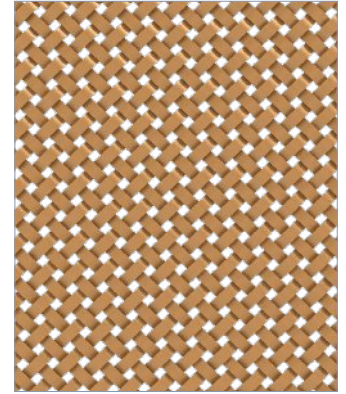
Muses-2420D



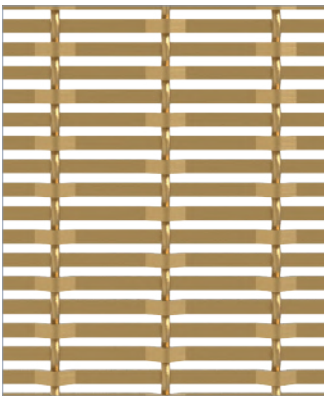
Muses-2419



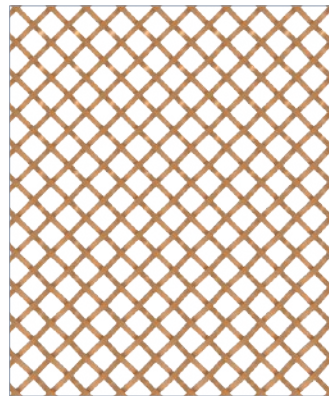
Muses-4910D



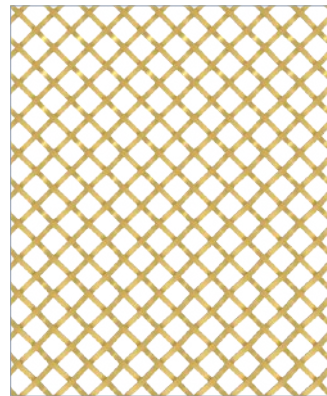
Muses-6853



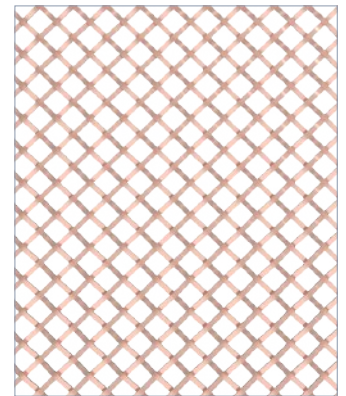
Muses-2416D



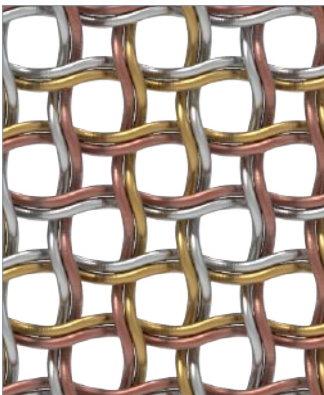
Muses-1963-C



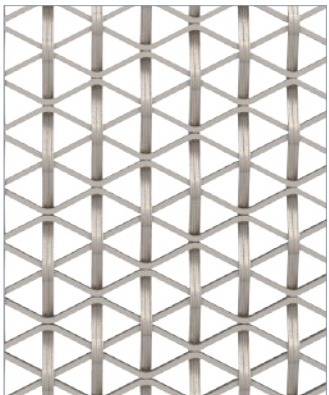
Muses-1963-B



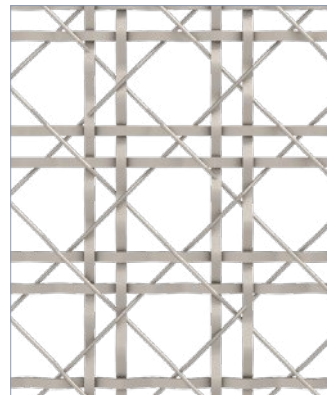
Muses-3060



Muses-2817



Muses-3038D



Muses-4920D



ARGGER

Muses 2726

Crimped

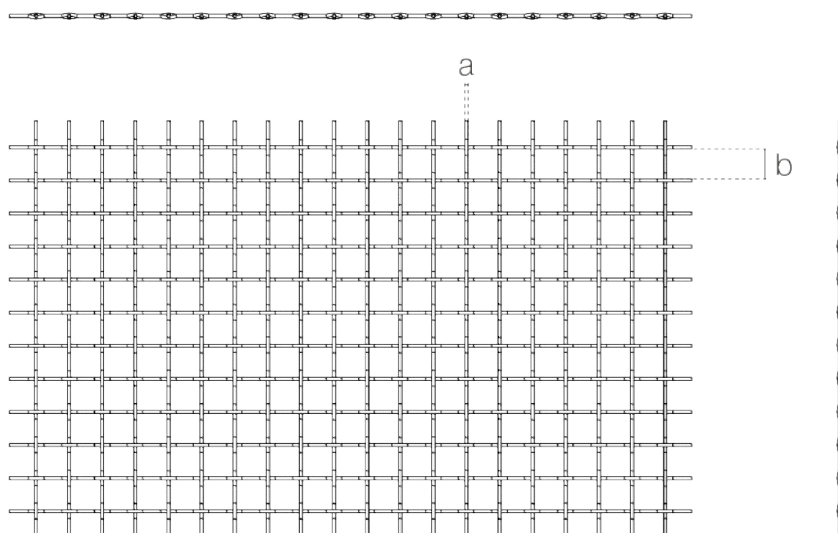
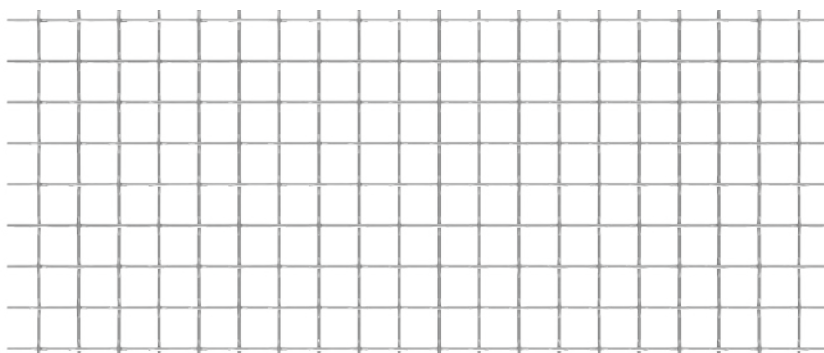
### SPACE

- Safety & Security
- Ceiling
- Interior Design
- Furniture

### APPLICATIONS

- Hotel
- Shopping center
- Office
- Concert hall
- Restaurant
- Family
- Recreation center
- School
- Theater
- Library
- Hospital

WEAVING INFINITE POSSIBILITIES



### SPECIFICATION

Material	SS304/SS316
Surface finish	baking varnish and plating
Wire diameter (a)	2.7 mm
Aperture (b)	26 mm
Open area	79.56%
Weight	3.6 kg/m <sup>2</sup>
Color	Natural colors, bronze, antique brass and brass







ARGGER

Muses 3020

Crimped

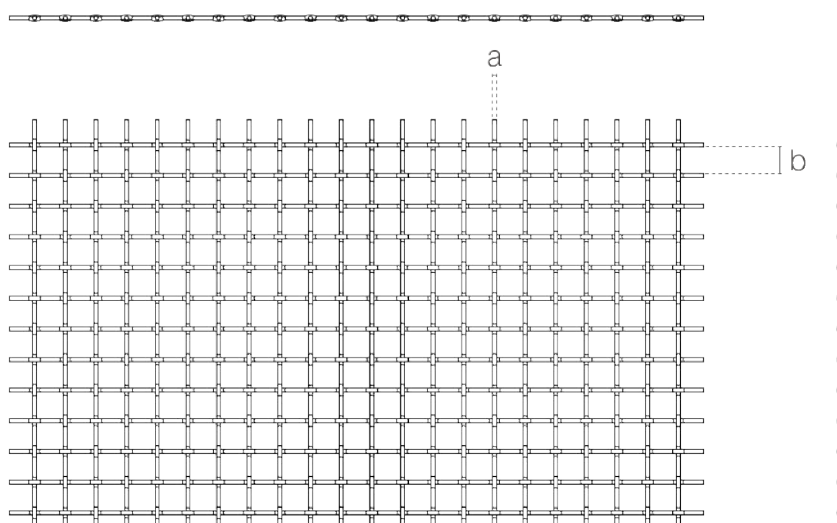
## SPACE

- Safety & Security
- Ceiling
- Interior Design
- Furniture

## APPLICATIONS

- Hotel
- Shopping center
- Office
- Concert hall
- Restaurant
- Family
- Recreation center
- School
- Theater
- Library
- Hospital

WEAVING INFINITE POSSIBILITIES



## SPECIFICATION

Material	SS304/SS316
Surface finish	baking varnish and plating
Wire diameter (a)	3 mm
Aperture (b)	20 mm
Open area	72.25%
Weight	5.4 kg/m <sup>2</sup>
Color	Natural colors, bronze, antique brass and brass





ARGGER

Muses 3227

Crimped

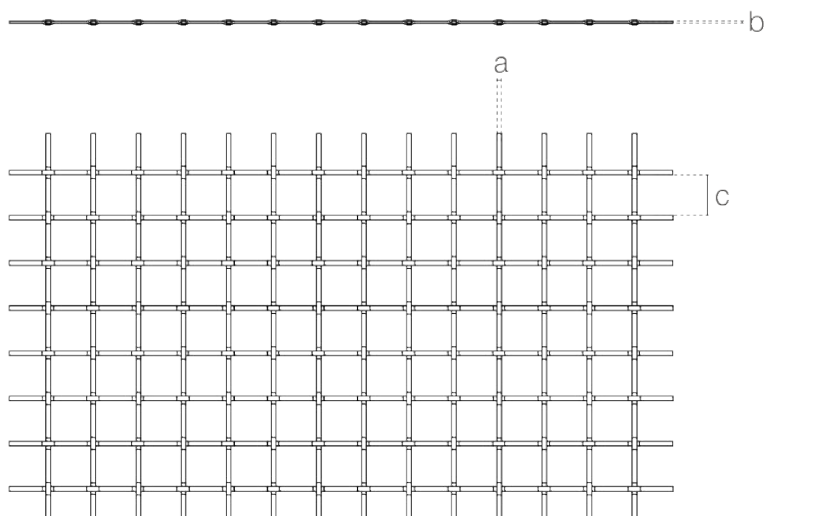
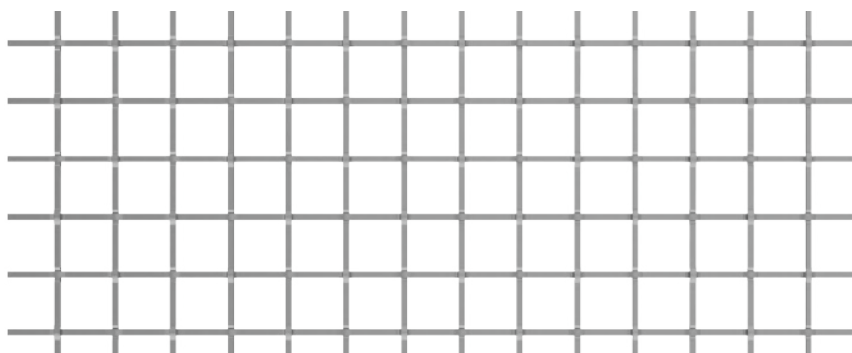
## SPACE

- Safety & Security
- Interior Design
- Furniture
- Ceiling

## APPLICATIONS

- Hotel
- Shopping center
- Office
- Concert hall
- Restaurant
- Family
- Recreation center
- School
- Theater
- Library
- Hospital

WEAVING INFINITE POSSIBILITIES



## SPECIFICATION

Material	SS304/SS316
Surface finish	baking varnish and plating
Flat wire width (a)	3.2 mm
Flat wire thickness (b)	1.5 mm
Aperture (c)	27.5 mm
Open area	78.83%
Weight	2.6 kg/m <sup>2</sup>
Color	Natural colors, bronze, antique brass and brass







ARGGER

Muses 1724

Crimped

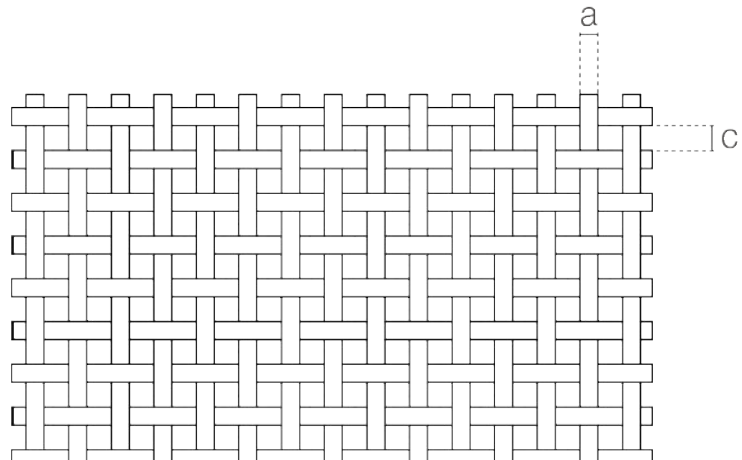
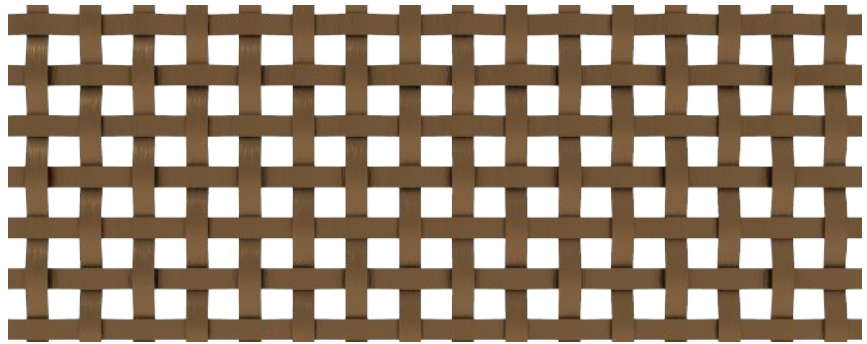
### SPACE

- Partition
- Safety & Security
- Ceiling
- Furniture
- Interior Design

### APPLICATIONS

- Hotel
- Shopping center
- Office
- Concert hall
- Restaurant
- Family
- Recreation center
- School
- Theater
- Library
- Hospital

WEAVING INFINITE POSSIBILITIES



### SPECIFICATION

Material	SS304/SS316
Surface finish	baking varnish and plating
Flat wire width (a)	17.85 mm
Flat wire thickness (b)	2.5 mm
Aperture (c)	24.5 × 24.5 mm
Open area	61.72%
Weight	16.944 kg/m <sup>2</sup>
Color	Natural colors, bronze, antique brass and brass





**ARGGER**

*Muses 5025*

**Crimped**

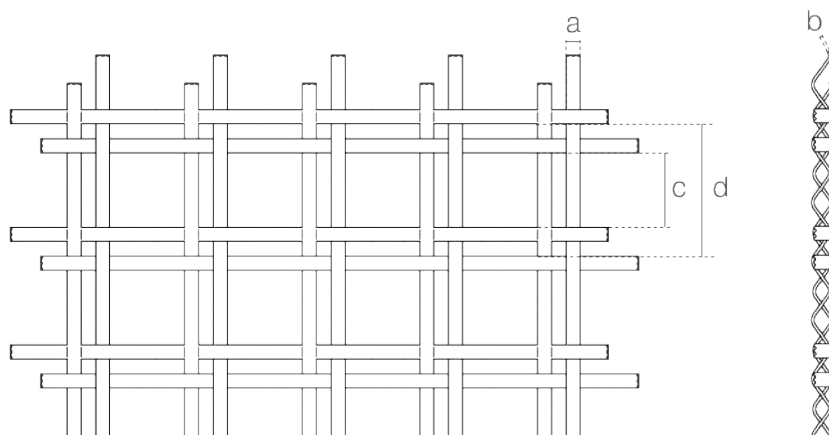
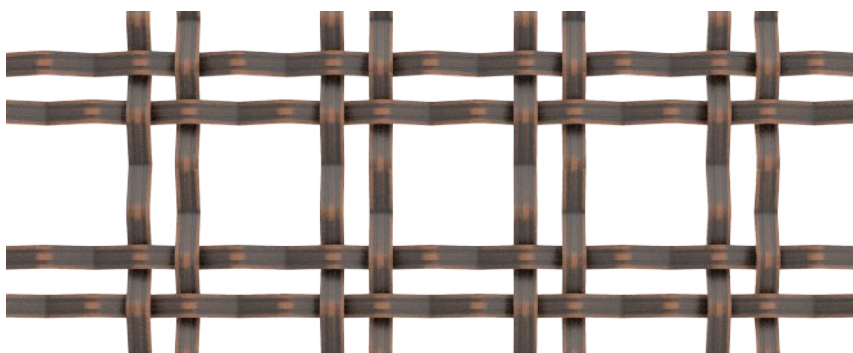
## SPACE

- Partition
- Safety & Security
- Ceiling
- Interior Design
- Furniture




## APPLICATIONS

- Hotel
- Shopping center
- Office
- Concert hall
- Restaurant
- Family
- Recreation center
- School
- Theater
- Library
- Hospital

**WEAVING INFINITE POSSIBILITIES**



## SPECIFICATION

<i>Material</i>	SS304/SS316
<i>Surface finish</i>	baking varnish and plating
<i>Flat wire width (a)</i>	5.0 mm
<i>Flat wire thickness (b)</i>	1.5 mm
<i>(c)</i>	5.25 × 5.25 mm
<i>(d)</i>	25.2 × 25.2 mm
<i>Open area</i>	60.6%
<i>Weight</i>	9.4 kg/m <sup>2</sup>
<i>Color</i>	Natural colors, bronze,    antique brass, brass or RAL colors







**ARGGER**

**Muses 1240D**

**Crimped**

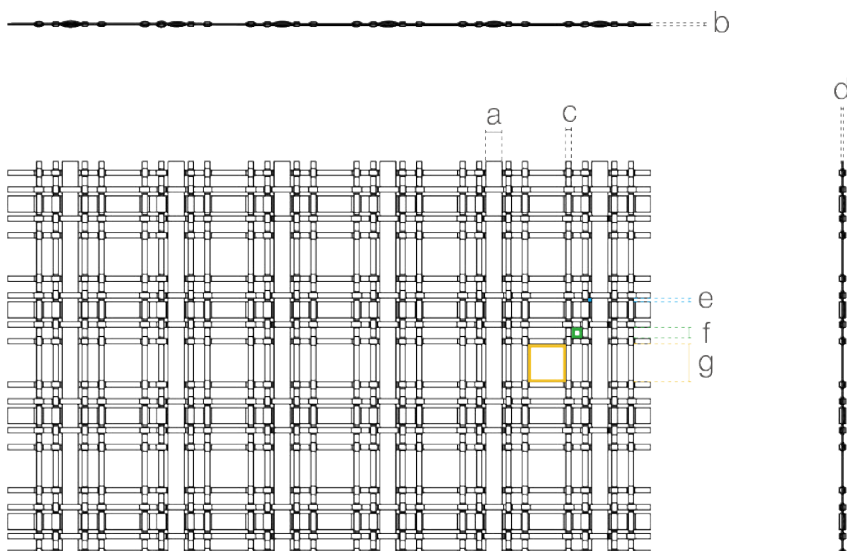
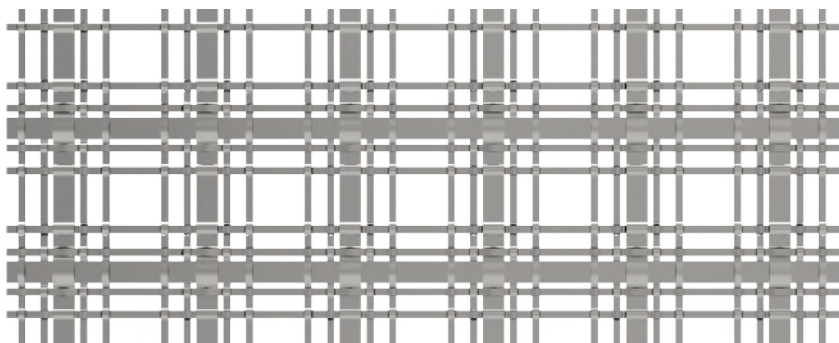
## SPACE

- Partition
- Safety & Security
- Ceiling
- Interior Design
- Furniture

## APPLICATIONS

- Hotel
- Shopping center
- Office
- Concert hall
- Restaurant
- Family
- Recreation center
- School
- Theater
- Library
- Hospital

**WEAVING INFINITE POSSIBILITIES**



## SPECIFICATION

<i>Material</i>	SS304/SS316
<i>Surface finish</i>	baking varnish and plating
<i>(a)</i>	12.2 mm
<i>(b)</i>	1 mm
<i>(c)</i>	4 mm
<i>(d)</i>	1 mm
<i>(e)</i>	3 mm × 3 mm
<i>(f)</i>	8.6 mm × 8.6 mm
<i>(g)</i>	28.9 mm × 28.9 mm
<i>Open area</i>	40.7%
<i>Weight</i>	5.7 kg/m <sup>2</sup>
<i>Color</i>	Natural colors, bronze, antique brass and brass





ARGGER

Muses 7221-S

Crimped

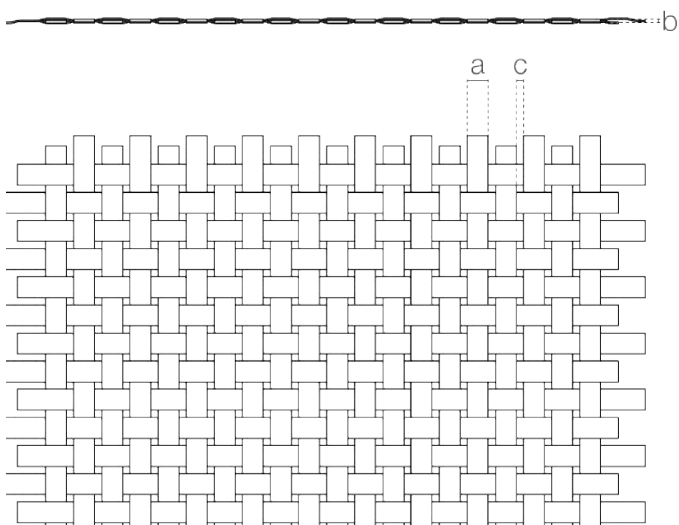
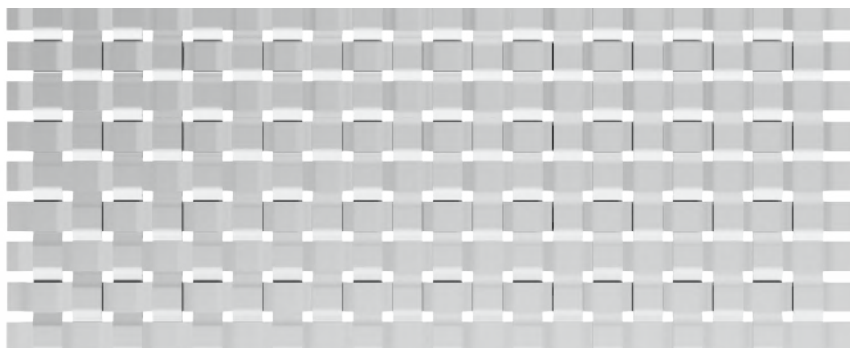
### SPACE

- Partition
- Safety & Security
- Ceiling
- Interior Design
- Wall Covering

### APPLICATIONS

- Hotel
- Shopping center
- Office
- Concert hall
- Restaurant
- Family
- Recreation center
- School
- Theater
- Library
- Hospital

WEAVING INFINITE POSSIBILITIES



### SPECIFICATION

Material	SS304/SS316
Surface finish	baking varnish and plating
Flat wire width (a)	7.2 mm
Flat wire thickness (b)	1 mm
Aperture (c)	2.1 mm
Open area	7.22%
Weight	5.2 kg/m <sup>2</sup>
Color	Natural colors, bronze, antique brass and brass





**ARGGER**

**Muses 7221-C**

**Crimped**

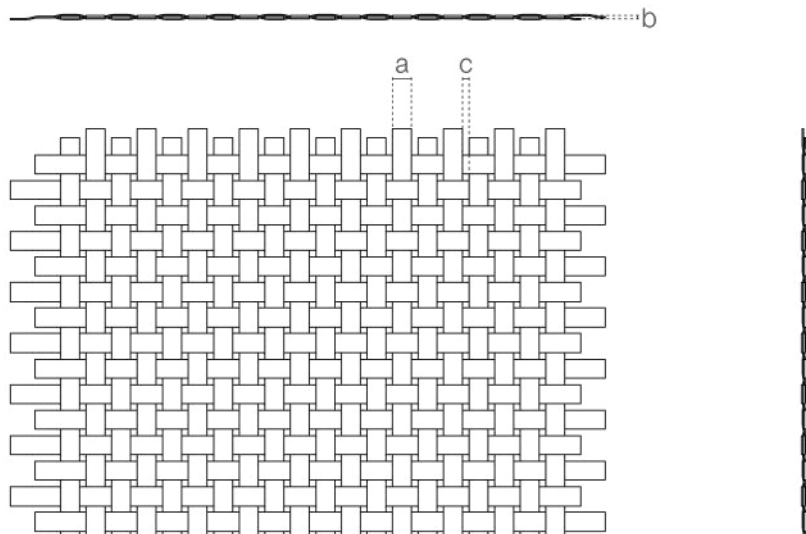
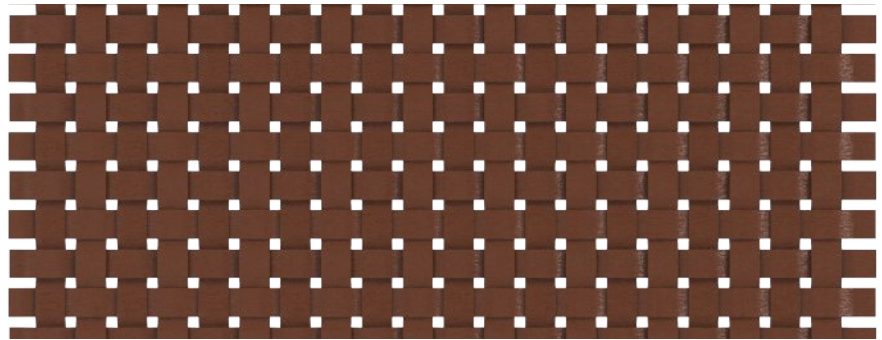
## SPACE

- Partition
- Safety & Security
- Ceiling
- Interior Design
- Wall Covering

## APPLICATIONS

- Hotel
- Shopping center
- Office
- Concert hall
- Restaurant
- Family
- Recreation center
- School
- Theater
- Library
- Hospital

**WEAVING INFINITE POSSIBILITIES**



## SPECIFICATION

<i>Material</i>	SS304/SS316
<i>Surface finish</i>	baking varnish and plating
<i>Flat wire width (a)</i>	7.2 mm
<i>Flat wire thickness (b)</i>	1 mm
<i>Aperture (c)</i>	2.1 mm
<i>Open area</i>	7.22%
<i>Weight</i>	5.2 kg/m <sup>2</sup>
<i>Color</i>	Natural colors, bronze, antique brass and brass







ARGGER

Muses 3134

Crimped

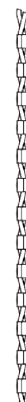
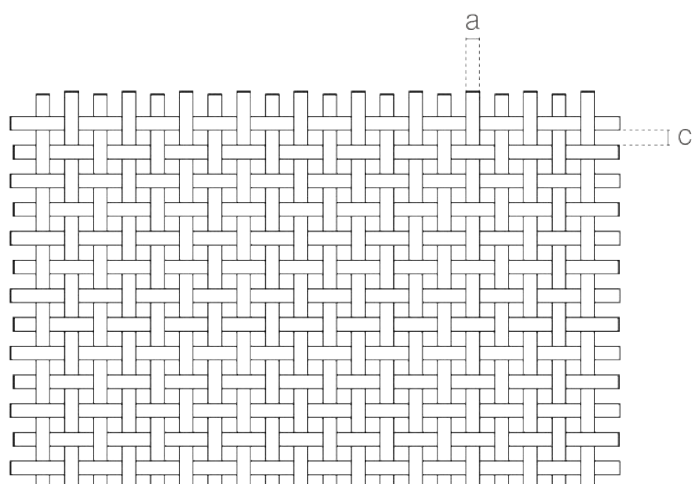
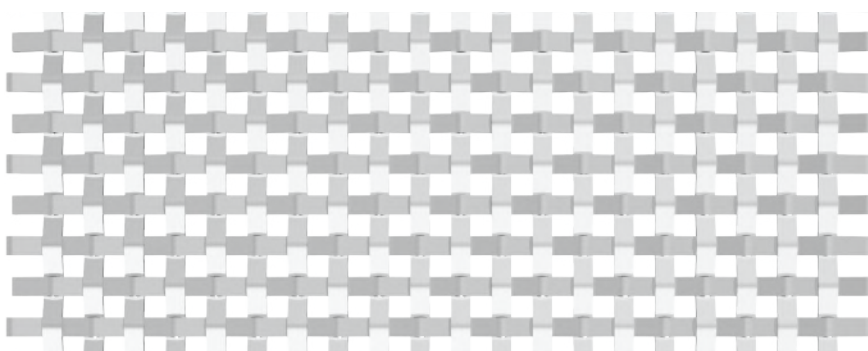
### SPACE

- Partition
- Safety & Security
- Facade
- Furniture
- Interior Design

### APPLICATIONS

- Hotel
- Shopping center
- Office
- Concert hall
- Restaurant
- Family
- Recreation center
- School
- Theater
- Library
- Hospital

WEAVING INFINITE POSSIBILITIES



### SPECIFICATION

Material	SS304/SS316
Surface finish	baking varnish and plating
Flat wire width (a)	3.12 mm
Flat wire thickness (b)	1 mm
Aperture (c)	3.43 mm
Open area	28.3%
Weight	7.25 kg/m <sup>2</sup>
Color	Natural colors, bronze, antique brass and brass





ARGGER

Muses 2314D

Crimped

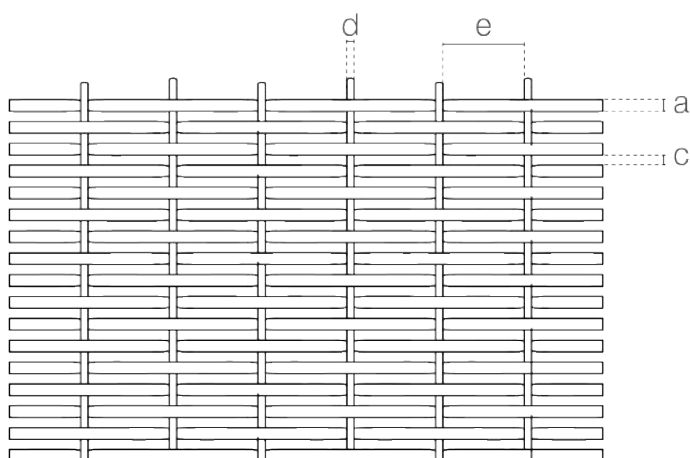
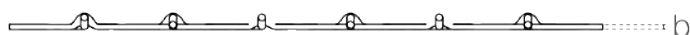
## SPACE

- Partition
- Safety & Security
- Ceiling
- Facade
- Interior Design
- Furniture
- Wall Covering

## APPLICATIONS

- Hotel
- Shopping center
- Office
- Concert hall
- Restaurant
- Family
- Recreation center
- School
- Theater
- Library
- Hospital

WEAVING INFINITE POSSIBILITIES



## SPECIFICATION

Material	SS304/SS316
Surface finish	baking varnish and plating
Flat wire width (a)	2.3 mm
Flat wire thickness (b)	1 mm
Flat wire pitch (c)	1.6 mm
Round wire diameter (d)	1.45 mm
Round wire pitch (e)	16 mm
Open area	36.7%
Weight	5.2 kg/m <sup>2</sup>
Color	Natural colors, bronze, antique brass and brass





**ARGGER**

**Muses 1621D**

**Crimped**

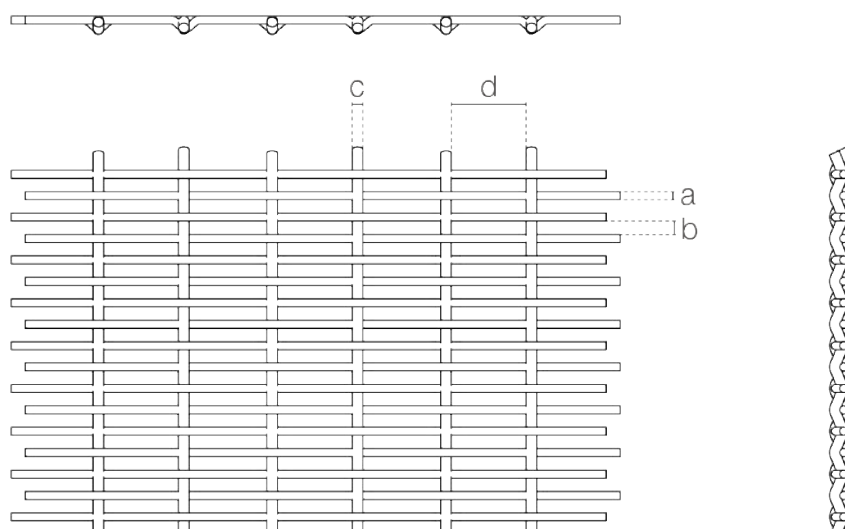
## SPACE

- Partition
- Safety & Security
- Ceiling
- Interior Design
- Furniture
- Wall Covering

## APPLICATIONS

- Hotel
- Shopping center
- Office
- Concert hall
- Restaurant
- Family
- Recreation center
- School
- Theater
- Library
- Hospital

**WEAVING INFINITE POSSIBILITIES**



## SPECIFICATION

<i>Material</i>	SS304/SS316
<i>Surface finish</i>	baking varnish and plating
<i>Round wire diameter (a)</i>	1.6 mm
<i>Round wire pitch (b)</i>	3 mm
<i>Rope diameter (c)</i>	2.15 mm
<i>Rope pitch (d)</i>	15 mm
<i>Open area</i>	56.12%
<i>Weight</i>	5.6 kg/m <sup>2</sup>
<i>Color</i>	Natural colors, bronze, antique brass and brass







**ARGGER**

**Muses 1519D**

**Crimped**

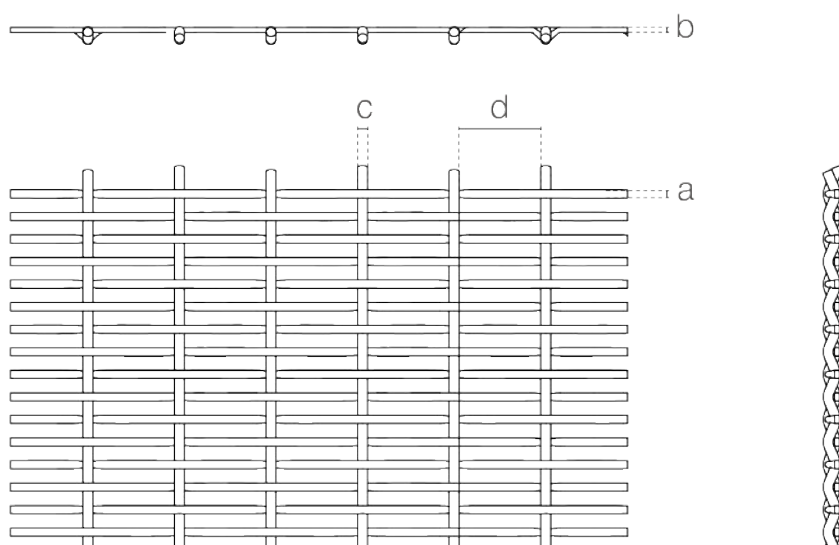
## SPACE

- Partition
- Safety & Security
- Ceiling
- Interior Design
- Furniture
- Wall Covering


## APPLICATIONS

- Hotel
- Shopping center
- Office
- Concert hall
- Restaurant
- Family
- Recreation center
- School
- Theater
- Library
- Hospital

**WEAVING INFINITE POSSIBILITIES**



## SPECIFICATION

<i>Material</i>	SS304/SS316
<i>Surface finish</i>	baking varnish and plating
<i>Flat wire width (a)</i>	1.55 mm
<i>Flat wire thickness (b)</i>	1 mm
<i>Rope diameter (c)</i>	1.9 mm
<i>Rope pitch (d)</i>	15.5 mm
<i>Open area</i>	56.12%
<i>Weight</i>	4.4 kg/m <sup>2</sup>
<i>Color</i>	Natural colors, bronze, antique brass and brass 



**ARGGER**

*Muses 2015D*

**Crimped**

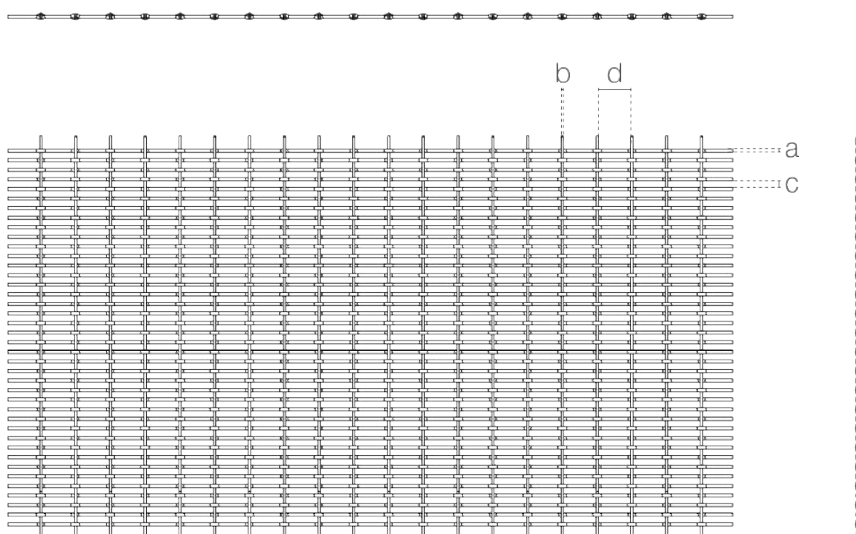
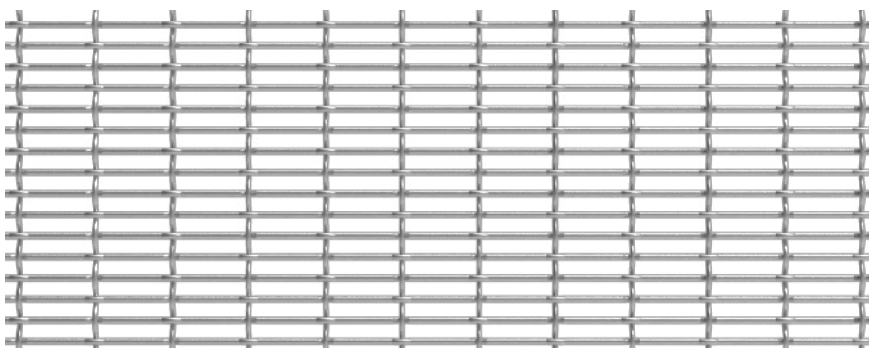
## SPACE

- Partition
- Safety & Security
- Ceiling
- Interior Design
- Furniture
- Wall Covering


## APPLICATIONS

- Hotel
- Shopping center
- Office
- Concert hall
- Restaurant
- Family
- Recreation center
- School
- Theater
- Library
- Hospital

**WEAVING INFINITE POSSIBILITIES**



## SPECIFICATION

<i>Material</i>	SS304/SS316
<i>Surface finish</i>	baking varnish and plating
<i>Thicker wire diameter (a)</i>	2 mm
<i>Thinner wire diameter (b)</i>	1.5 mm
<i>Thicker wire pitch (c)</i>	4 mm
<i>Thinner wire pitch (d)</i>	20.3 mm
<i>Open area</i>	61.05%
<i>Weight</i>	5 kg/m <sup>2</sup>
<i>Color</i>	Natural colors, bronze, antique brass and brass 





**ARGGER**

*Muses 2011D*

**Crimped**

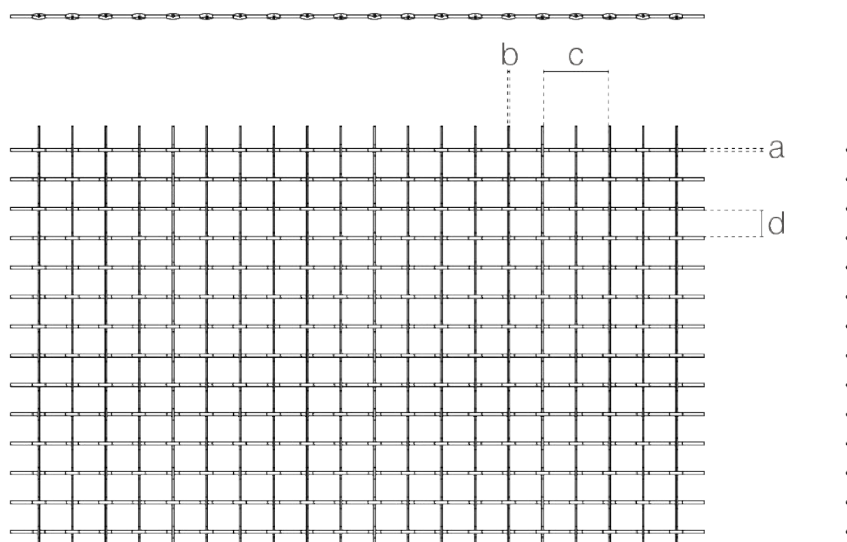
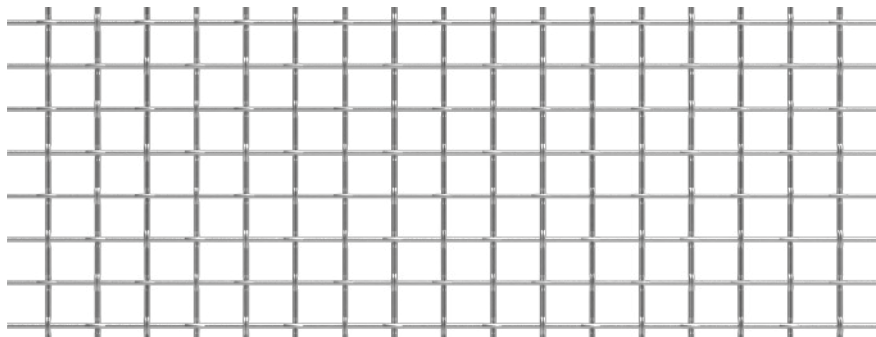
## SPACE

- Partition
- Safety & Security
- Ceiling
- Interior Design
- Furniture
- Wall Covering

## APPLICATIONS

- Hotel
- Shopping center
- Office
- Concert hall
- Restaurant
- Family
- Recreation center
- School
- Theater
- Library
- Hospital

**WEAVING INFINITE POSSIBILITIES**



## SPECIFICATION

<i>Material</i>	SS304/SS316
<i>Surface finish</i>	baking varnish and plating
<i>Thicker wire diameter (a)</i>	2 mm
<i>Thinner wire diameter (b)</i>	1.15 mm
<i>Twin thinner wire pitch (c)</i>	20 mm
<i>Thicker wire pitch (d)</i>	16.5 mm
<i>Open area</i>	82.94%
<i>Weight</i>	1.9 kg/m <sup>2</sup>
<i>Color</i>	Natural colors, bronze, antique brass and brass







**ARGGER**

*Muses 2023D*

**Crimped**

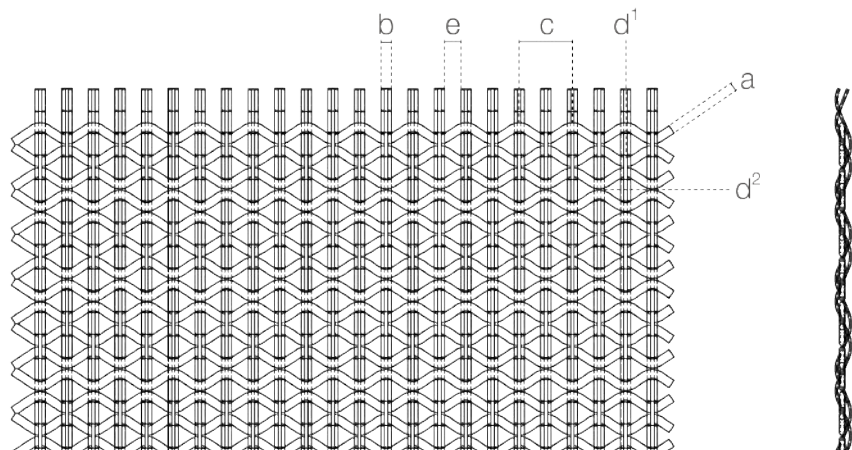
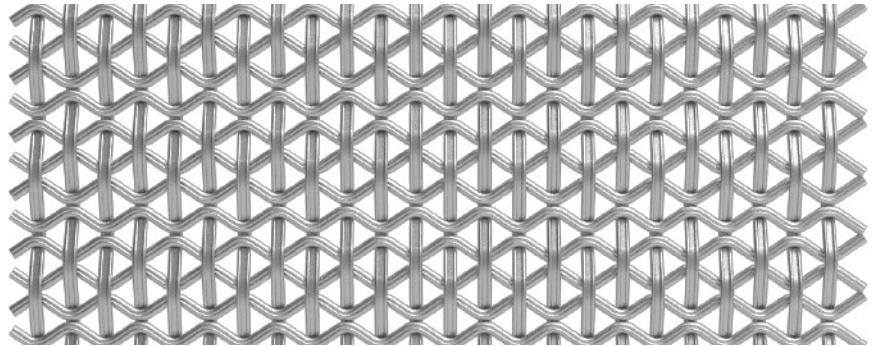
## SPACE

- Partition
- Safety & Security
- Ceiling
- Facade
- Interior Design
- Furniture
- Wall Covering

## APPLICATIONS

- Hotel
- Shopping center
- Office
- Concert hall
- Restaurant
- Family
- Recreation center
- School
- Theater
- Library
- Hospital

**WEAVING INFINITE POSSIBILITIES**



## SPECIFICATION

<i>Material</i>	SS304/SS316
<i>Surface finish</i>	baking varnish and plating
<i>Wavy round wire diameter (a)</i>	2 mm
<i>Groove wire width (b)</i>	2.3 mm
<i>Wavy wire pitch (c)</i>	12 mm
<i>Wavy rhombus (d)</i>	6 mm (d <sup>1</sup> ) × 10 mm (d <sup>2</sup> )
<i>Groove Wire pitch (e)</i>	4 mm
<i>Open area</i>	47.2%
<i>Weight</i>	5.1 kg/m <sup>2</sup>
<i>Color</i>	Natural colors, bronze, antique brass and brass





**ARGGER**

**Muses 1220D**

**Crimped**

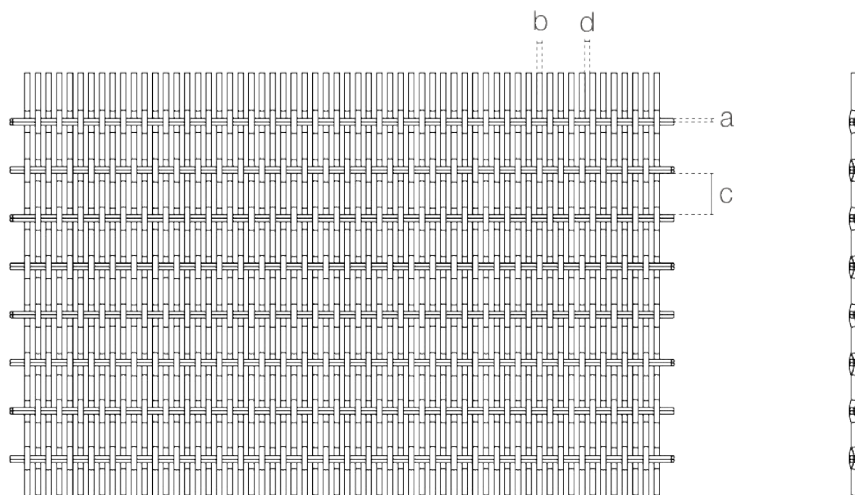
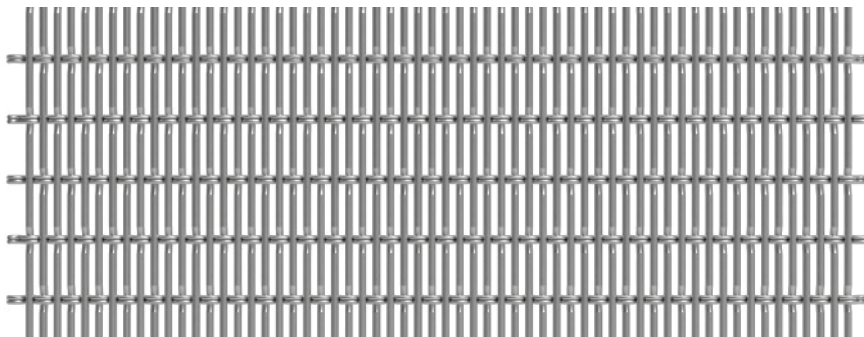
## SPACE

- Partition
- Safety & Security
- Ceiling
- Facade
- Interior Design
- Furniture
- Wall Covering

## APPLICATIONS

- Hotel
- Shopping center
- Office
- Concert hall
- Restaurant
- Family
- Recreation center
- School
- Theater
- Library
- Hospital

**WEAVING INFINITE POSSIBILITIES**



## SPECIFICATION

<i>Material</i>	SS304/SS316
<i>Surface finish</i>	baking varnish and plating
<i>(a)</i>	1.2 mm
<i>(b)</i>	2 mm
<i>(c)</i>	15 mm
<i>(d)</i>	1.85 mm
<i>Open area</i>	41.09%
<i>Weight</i>	7.7 kg/m <sup>2</sup>
<i>Color</i>	Natural colors, bronze, antique brass and brass 





**ARGGER**

**Muses 1585**

**Crimped**

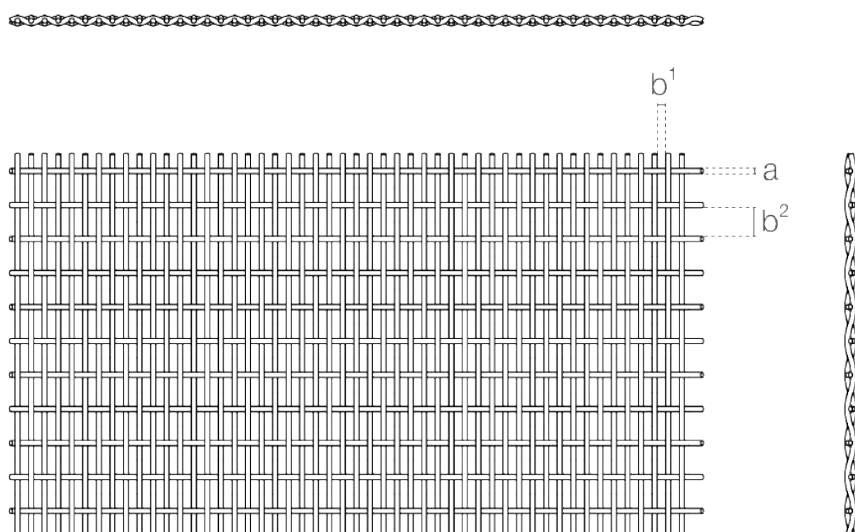
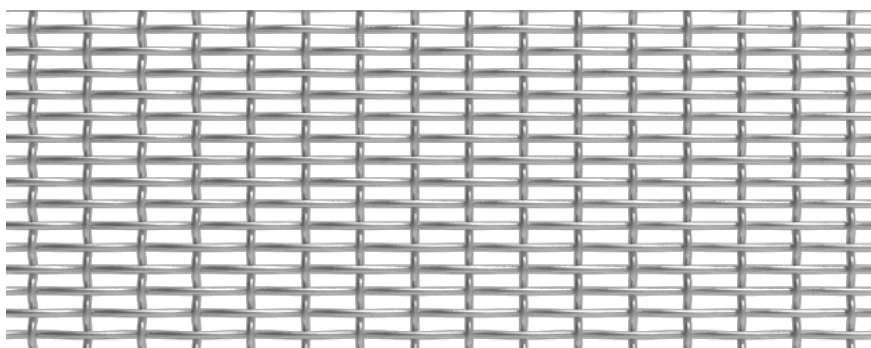
## SPACE

- Partition
- Safety & Security
- Ceiling
- Facade
- Interior Design
- Furniture
- Wall Covering

## APPLICATIONS

- Hotel
- Shopping center
- Office
- Concert hall
- Restaurant
- Family
- Recreation center
- School
- Theater
- Library
- Hospital

**WEAVING INFINITE POSSIBILITIES**



## SPECIFICATION

<i>Material</i>	SS304/SS316
<i>Surface finish</i>	baking varnish and plating
<i>Wire diameter (a)</i>	1.5 mm
<i>Aperture (b)</i>	2.5 mm ( $b^1$ ) $\times$ 8.5 mm ( $b^2$ )
<i>Open area</i>	53.2%
<i>Weight</i>	5 kg/m <sup>2</sup>
<i>Color</i>	Natural colors, bronze, antique brass and brass







ARGGER

Muses 1520D

Crimped

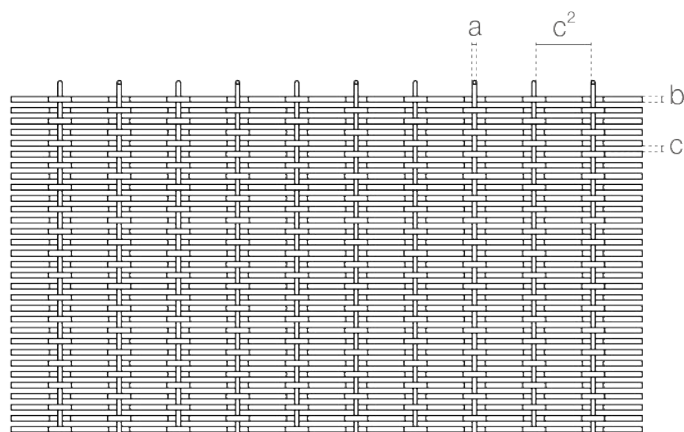
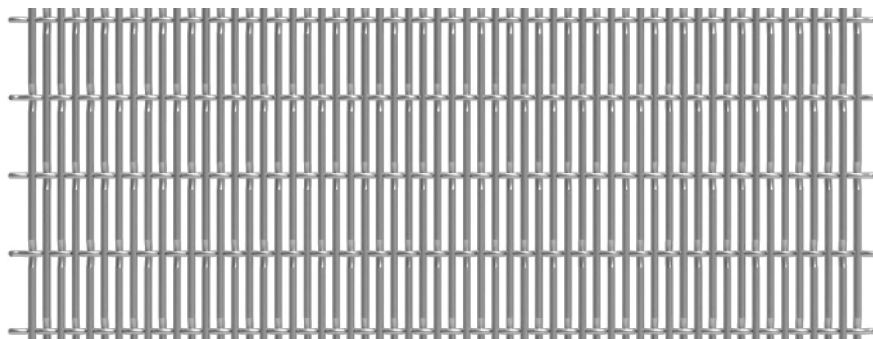
## SPACE

- Partition
- Safety & Security
- Ceiling
- Facade
- Interior Design
- Furniture
- Wall Covering

## APPLICATIONS

- Hotel
- Shopping center
- Office
- Concert hall
- Restaurant
- Family
- Recreation center
- School
- Theater
- Library
- Hospital

WEAVING INFINITE POSSIBILITIES



## SPECIFICATION

Material	SS304/SS316
Surface finish	baking varnish and plating
Vertical wire diameter (a)	1.5 mm
Horizontal wire diameter (b)	2 mm
Aperture (c)	2 mm (c <sup>1</sup> ) × 20 mm (c <sup>2</sup> )
Open area	47%
Weight	6.9 kg/m <sup>2</sup>
Color	Natural colors, bronze, antique brass and brass





**ARGGER**

*Muses 2045*

**Crimped**

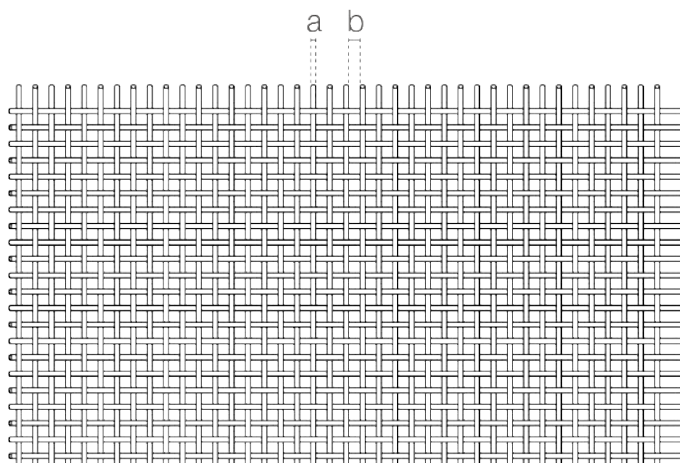
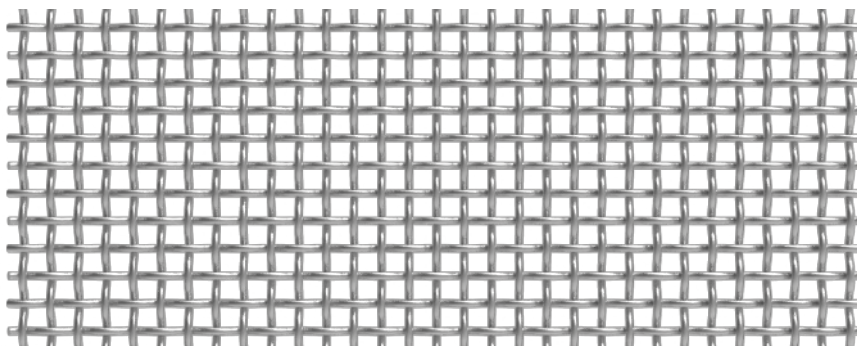
## SPACE

- Partition
- Safety & Security
- Ceiling
- Facade
- Interior Design
- Furniture
- Wall Covering


## APPLICATIONS

- Hotel
- Shopping center
- Office
- Concert hall
- Restaurant
- Family
- Recreation center
- School
- Theater
- Library
- Hospital

**WEAVING INFINITE POSSIBILITIES**



## SPECIFICATION

<i>Material</i>	SS304/SS316
<i>Surface finish</i>	baking varnish and plating
<i>Wire diameter (a)</i>	2 mm
<i>Aperture (b)</i>	4.5 × 4.5 mm
<i>Open area</i>	47.6%
<i>Weight</i>	8.2 kg/m <sup>2</sup>
<i>Color</i>	Natural colors, bronze, antique brass and brass 





ARGGER

Muses 1535

Crimped

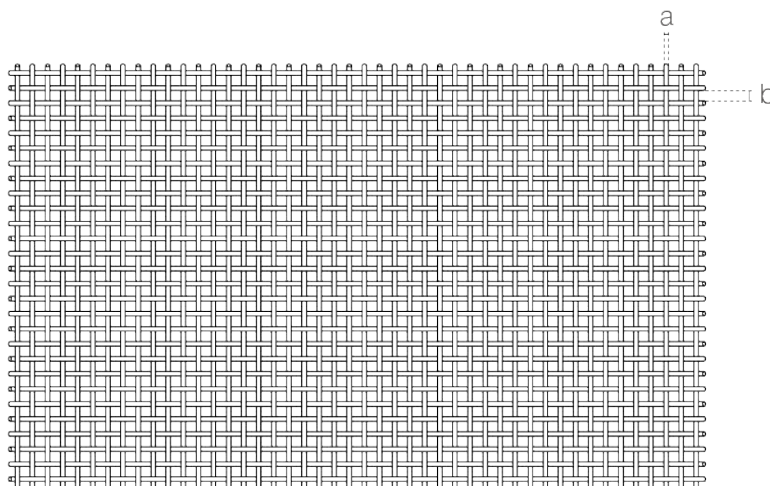
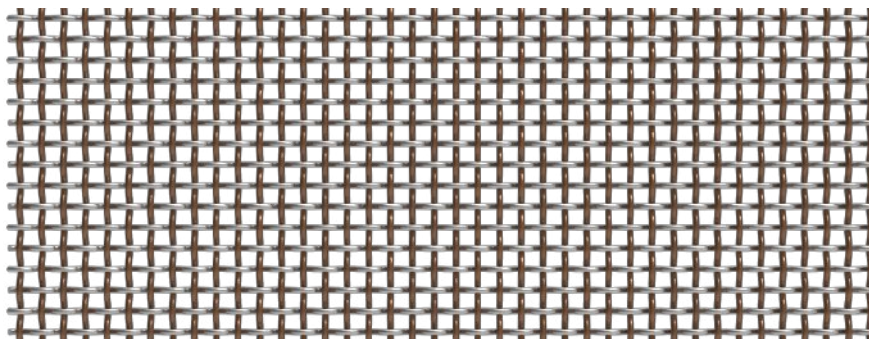
## SPACE

- Partition
- Safety & Security
- Ceiling
- Facade
- Interior Design
- Furniture
- Wall Covering

## APPLICATIONS

- Hotel
- Shopping center
- Office
- Concert hall
- Restaurant
- Family
- Recreation center
- School
- Theater
- Library
- Hospital

WEAVING INFINITE POSSIBILITIES



## SPECIFICATION

Material	SS304/SS316
Surface finish	baking varnish and plating
Wire diameter (a)	1.5 mm
Aperture (b)	3.5 × 3.5 mm
Open area	49%
Weight	6 kg/m <sup>2</sup>
Color	Natural colors, bronze, antique brass and brass





**ARGGER**

*Muses 2236*

**Crimped**

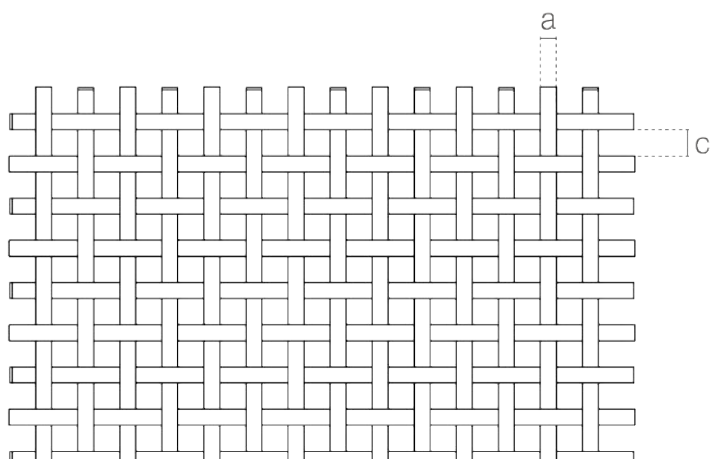
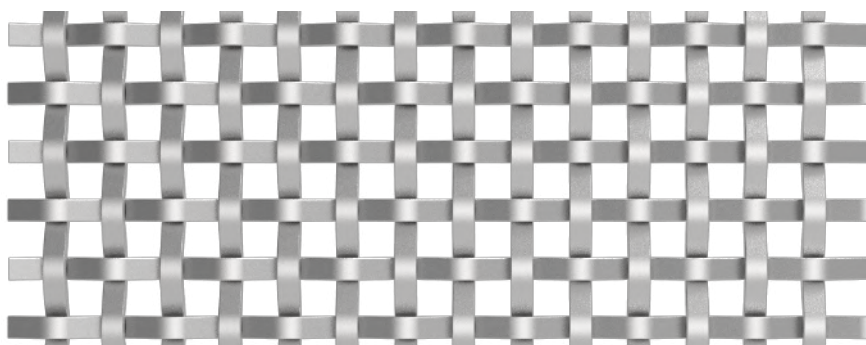
## SPACE

- Partition
- Safety & Security
- Ceiling
- Facade
- Interior Design
- Furniture
- Wall Covering

## APPLICATIONS

- Hotel
- Shopping center
- Office
- Concert hall
- Restaurant
- Family
- Recreation center
- School
- Theater
- Library
- Hospital

**WEAVING INFINITE POSSIBILITIES**



## SPECIFICATION

<i>Material</i>	SS304/SS316
<i>Surface finish</i>	baking varnish and plating
<i>Flat wire width (a)</i>	2.2 mm
<i>Flat wire thickness (b)</i>	1 mm
<i>Aperture (c)</i>	3.6 × 3.6 mm
<i>Open area</i>	37.3%
<i>Weight</i>	5.86 kg/m <sup>2</sup>
<i>Color</i>	Natural colors, bronze, antique brass and brass







ARGGER

Muses 1015D

Crimped

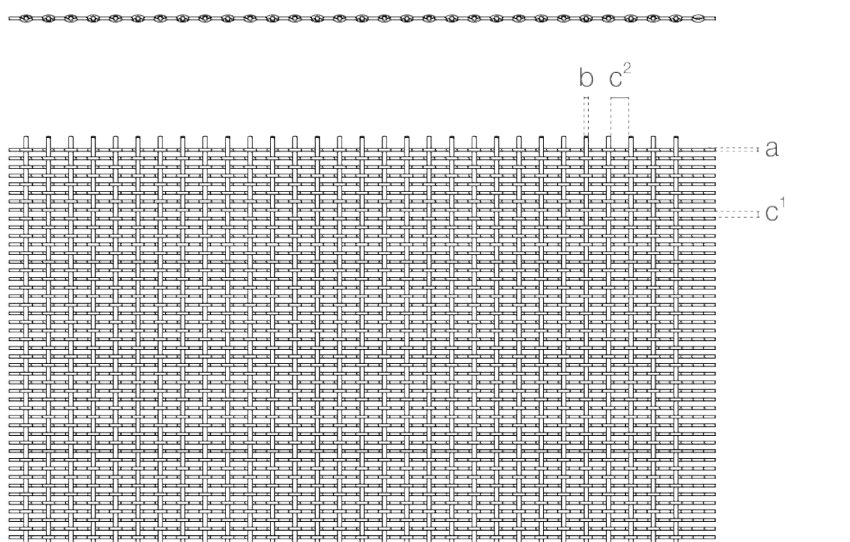
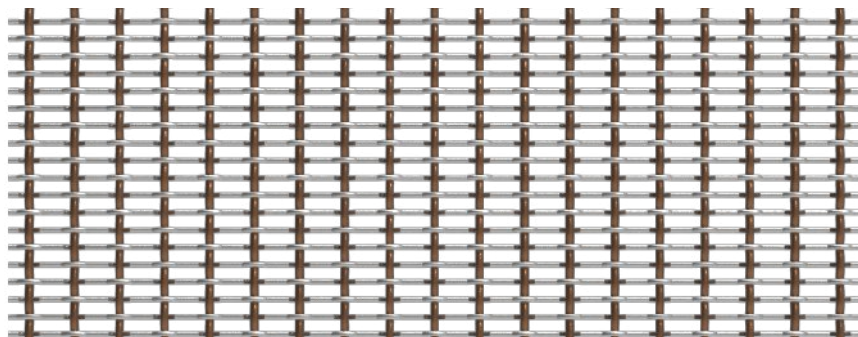
## SPACE

- Partition
- Safety & Security
- Ceiling
- Facade
- Interior Design
- Furniture
- Wall Covering

## APPLICATIONS

- Hotel
- Shopping center
- Office
- Concert hall
- Restaurant
- Family
- Recreation center
- School
- Theater
- Library
- Hospital

WEAVING INFINITE POSSIBILITIES



## SPECIFICATION

Material	SS304/SS316
Surface finish	baking varnish and plating
Horizontal wire diameter (a)	1 mm
Vertical wire diameter (b)	1.5 mm
Aperture (c)	2 mm (c <sup>1</sup> ) × 6.3 mm (c <sup>2</sup> )
Open area	54%
Weight	3.9 kg/m <sup>2</sup>
Color	Natural colors, bronze, antique brass and brass





**ARGGER**

**Muses 2035-BZ**

**Crimped**

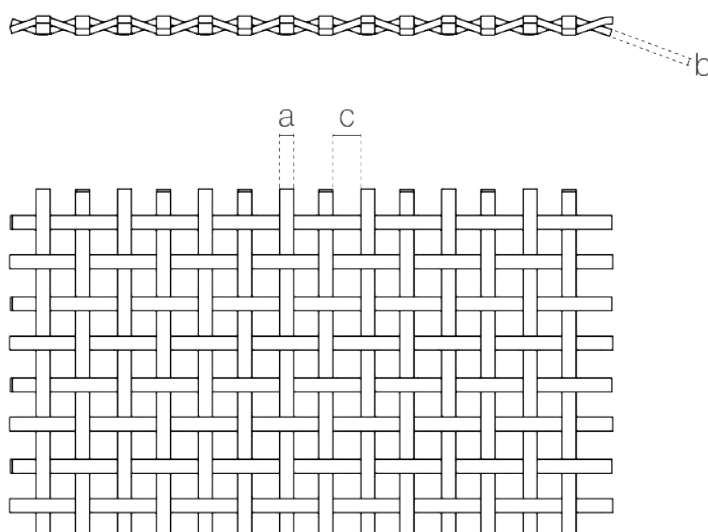
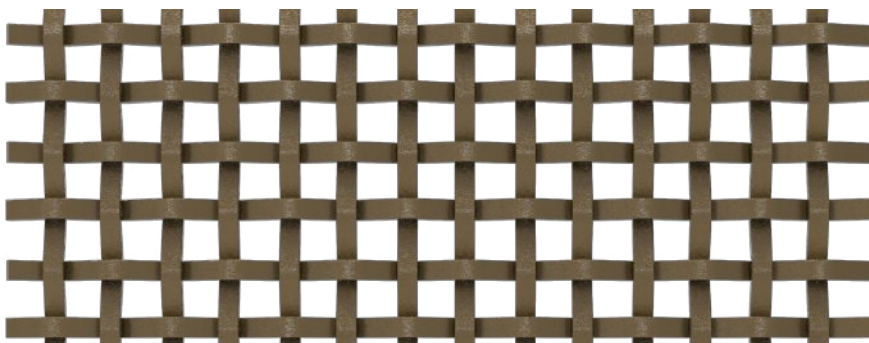
## SPACE

- Partition
- Safety & Security
- Ceiling
- Facade
- Interior Design
- Furniture
- Wall Covering

## APPLICATIONS

- Hotel
- Shopping center
- Office
- Concert hall
- Restaurant
- Family
- Recreation center
- School
- Theater
- Library
- Hospital

**WEAVING INFINITE POSSIBILITIES**



## SPECIFICATION

<i>Material</i>	SS304/SS316
<i>Surface finish</i>	baking varnish and plating
<i>Flat wire width (a)</i>	2 mm
<i>Flat wire thickness (b)</i>	1 mm
<i>Aperture (c)</i>	3.5 × 3.5 mm
<i>Open area</i>	40.53%
<i>Weight</i>	5.86 kg/m <sup>2</sup>
<i>Color</i>	Natural colors, bronze, antique brass and brass





ARGGER

Muses 2035-S

Crimped

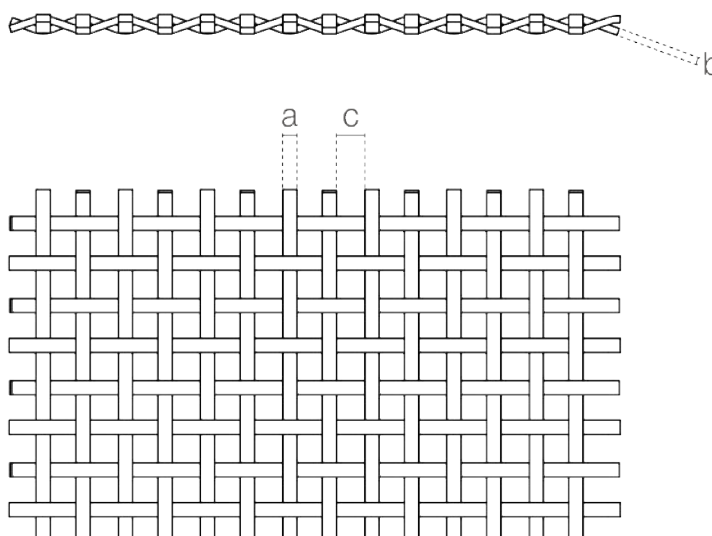
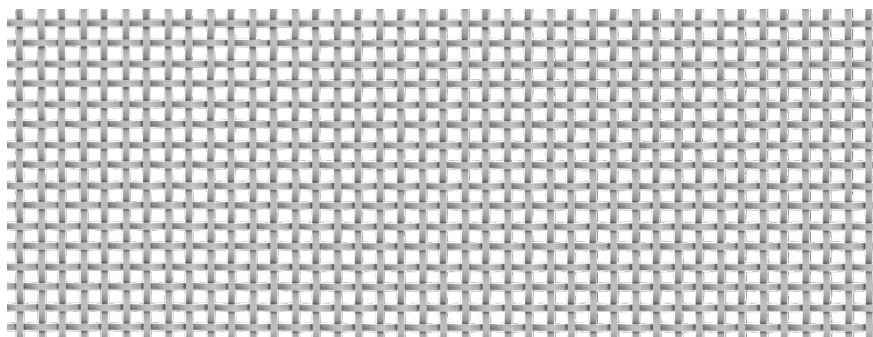
### SPACE

- Partition
- Safety & Security
- Ceiling
- Facade
- Interior Design
- Furniture
- Wall Covering

### APPLICATIONS

- Hotel
- Shopping center
- Office
- Concert hall
- Restaurant
- Family
- Recreation center
- School
- Theater
- Library
- Hospital

WEAVING INFINITE POSSIBILITIES



### SPECIFICATION

Material	SS304/SS316
Surface finish	baking varnish and plating
Flat wire width (a)	2 mm
Flat wire thickness (b)	1 mm
Aperture (c)	3.5 × 3.5 mm
Open area	40.53%
Weight	5.86 kg/m <sup>2</sup>
Color	Natural colors, bronze, antique brass and brass





ARGGER

Muses 1040

Crimped

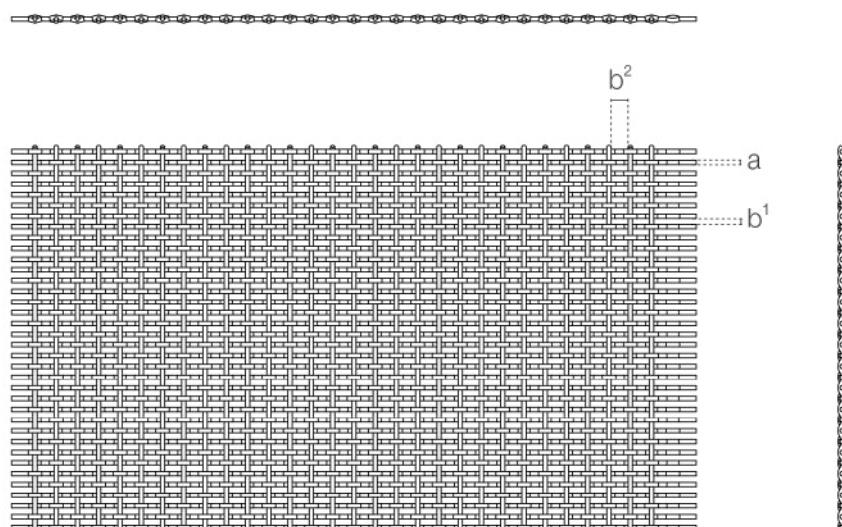
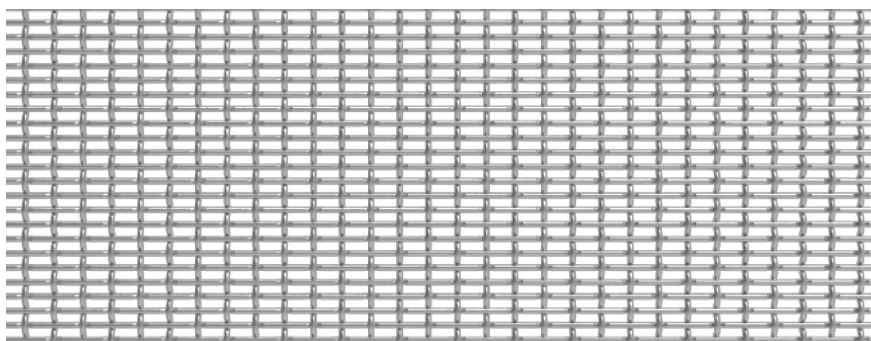
### SPACE

- Partition
- Safety & Security
- Ceiling
- Facade
- Interior Design
- Furniture
- Wall Covering

### APPLICATIONS

- Hotel
- Shopping center
- Office
- Concert hall
- Restaurant
- Family
- Recreation center
- School
- Theater
- Library
- Hospital

WEAVING INFINITE POSSIBILITIES



### SPECIFICATION

Material	SS304/SS316
Surface finish	baking varnish and plating
Wire diameter (a)	1 mm
Aperture (b)	1.5 mm ( $b^1$ ) $\times$ 4 mm ( $b^2$ )
Open area	48%
Weight	3.8 kg/m <sup>2</sup>
Color	Natural colors, bronze, antique brass and brass







ARGGER

Muses 3070

Crimped

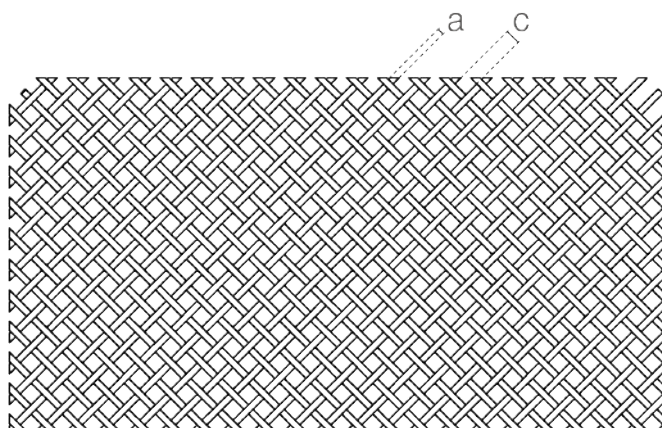
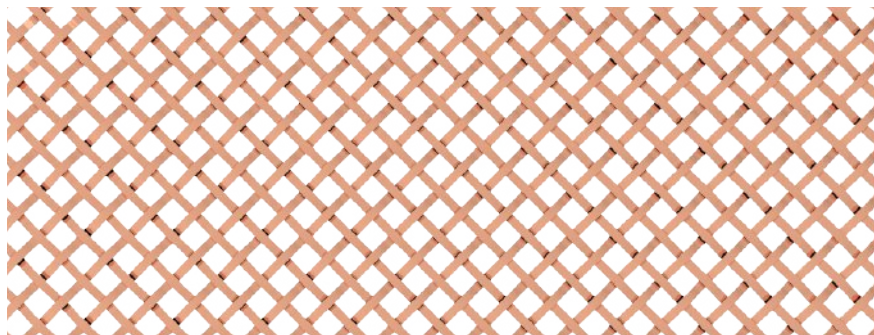
### SPACE

- Partition
- Safety & Security
- Ceiling
- Facade
- Interior Design
- Furniture
- Wall Covering

### APPLICATIONS

- Hotel
- Shopping center
- Office
- Concert hall
- Restaurant
- Family
- Recreation center
- School
- Theater
- Library
- Hospital

WEAVING INFINITE POSSIBILITIES



### SPECIFICATION

Material	SS304/SS316
Surface finish	baking varnish and plating
Flat wire width (a)	3 mm
Flat wire thickness (b)	1.3 mm
Flat wire aperture (c)	7 × 7 mm
Open area	49%
Weight	6.3 kg/m <sup>2</sup>
Color	Natural colors, bronze, antique brass and brass





**ARGGER**

*Muses 10070*

**Crimped**

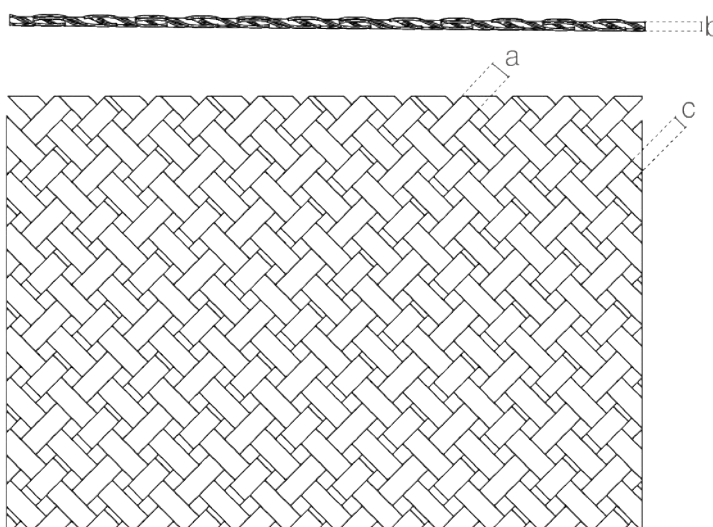
#### SPACE

- Partition
- Safety & Security
- Ceiling
- Facade
- Interior Design
- Furniture
- Wall Covering

#### APPLICATIONS

- Hotel
- Shopping center
- Office
- Concert hall
- Restaurant
- Family
- Recreation center
- School
- Theater
- Library
- Hospital

WEAVING INFINITE POSSIBILITIES



#### SPECIFICATION

<i>Material</i>	SS304/SS316
<i>Surface finish</i>	baking varnish and plating
<i>Flat wire width (a)</i>	10 mm
<i>Flat wire thickness (b)</i>	1 mm
<i>Flat wire aperture (c)</i>	7 mm
<i>Open area</i>	16%
<i>Weight</i>	9.5 kg/m <sup>2</sup>
<i>Color</i>	Natural colors, bronze, antique brass and brass





**ARGGER**

**Muses 3270**

**Crimped**

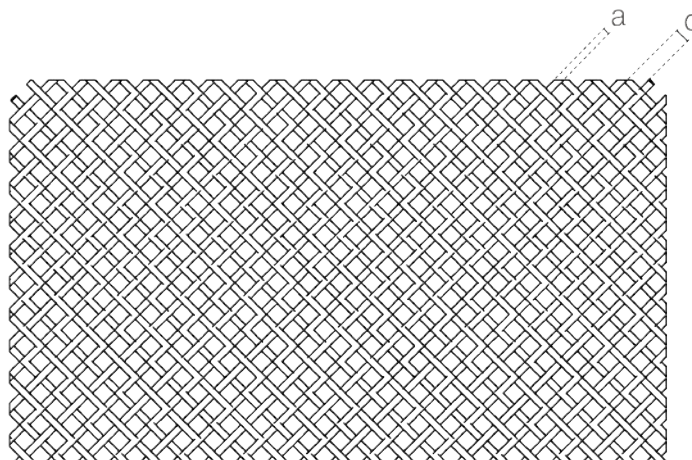
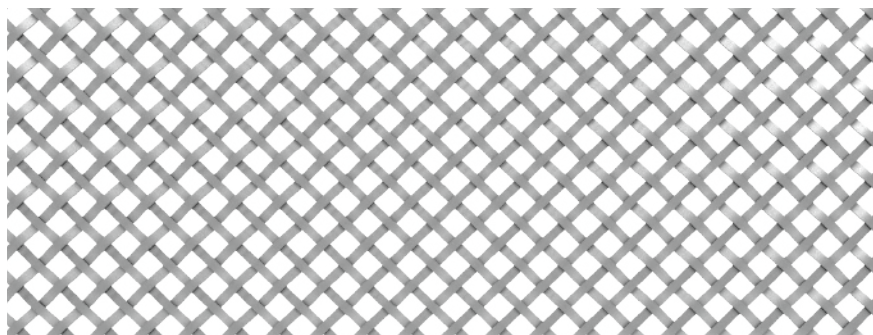
## SPACE

- Partition
- Safety & Security
- Ceiling
- Facade
- Interior Design
- Furniture
- Wall Covering

## APPLICATIONS

- Hotel
- Shopping center
- Office
- Concert hall
- Restaurant
- Family
- Recreation center
- School
- Theater
- Library
- Hospital

**WEAVING INFINITE POSSIBILITIES**



## SPECIFICATION

<i>Material</i>	SS304/SS316
<i>Surface finish</i>	baking varnish and plating
<i>Flat wire width (a)</i>	3.2 mm
<i>Flat wire thickness (b)</i>	1.4 mm
<i>Flat wire aperture (c)</i>	7 mm
<i>Open area</i>	46.3%
<i>Weight</i>	6.7 kg/m <sup>2</sup>
<i>Color</i>	Natural colors, bronze, antique brass and brass





**ARGGER**

*Muses 3088*

**Crimped**

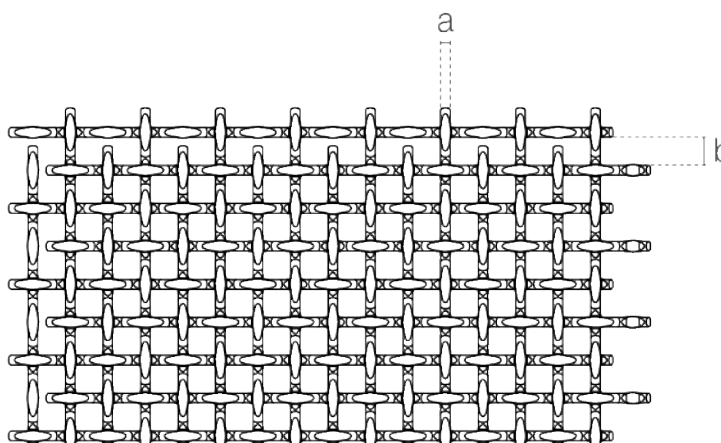
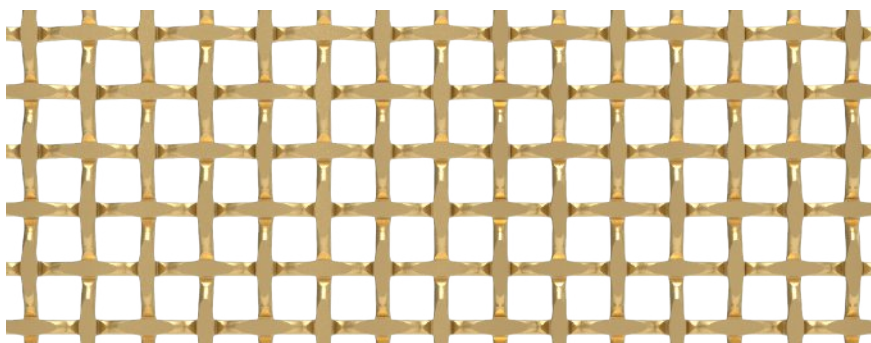
## SPACE

- Partition
- Safety & Security
- Ceiling
- Interior Design
- Furniture
- Wall Covering

## APPLICATIONS

- Hotel
- Shopping center
- Office
- Concert hall
- Restaurant
- Family
- Recreation center
- School
- Theater
- Library
- Hospital

**WEAVING INFINITE POSSIBILITIES**



## SPECIFICATION

<i>Material</i>	SS304/SS316
<i>Surface finish</i>	baking varnish and plating
<i>Flat wire width (a)</i>	3.2 mm
<i>Flat wire thickness (b)</i>	1.4 mm
<i>Flat wire aperture (c)</i>	7 mm
<i>Open area</i>	46.3%
<i>Weight</i>	6.7 kg/m <sup>2</sup>
<i>Color</i>	Natural colors, bronze, antique brass and brass







**ARGGER**

**Muses 31100D**

**Crimped**

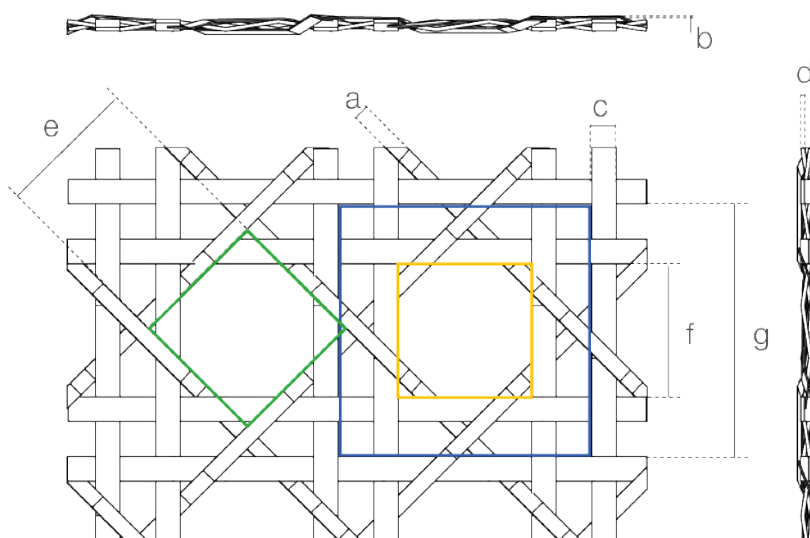
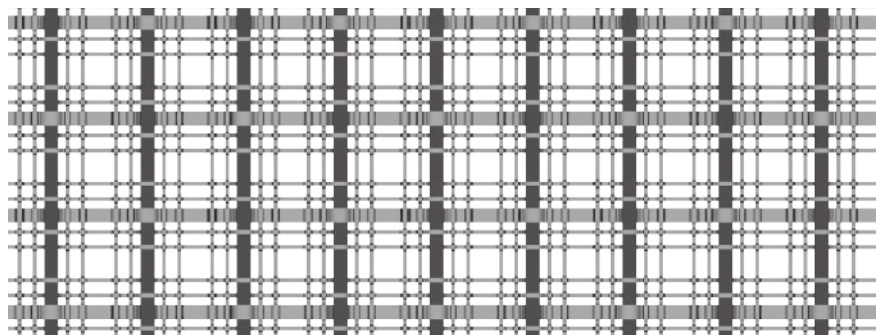
## SPACE

- Partition
- Safety & Security
- Ceiling
- Interior Design
- Furniture
- Wall Covering

## APPLICATIONS

- Hotel
- Shopping center
- Office
- Concert hall
- Restaurant
- Family
- Recreation center
- School
- Theater
- Library
- Hospital

**WEAVING INFINITE POSSIBILITIES**



## SPECIFICATION

<i>Material</i>	SS304/SS316
<i>Surface finish</i>	baking varnish and plating
<i>(a)</i>	3 mm
<i>(b)</i>	1 mm
<i>(c)</i>	10 mm
<i>(d)</i>	1 mm
<i>(e)</i>	20 × 20 mm
<i>(f)</i>	41 × 41 mm
<i>(g)</i>	57 × 57 mm
<i>Open area</i>	40.7%
<i>Weight</i>	5.7 kg/m <sup>2</sup>
<i>Color</i>	Natural colors, bronze, antique brass and brass





**ARGGER**

**Muses 3033**

**Crimped**

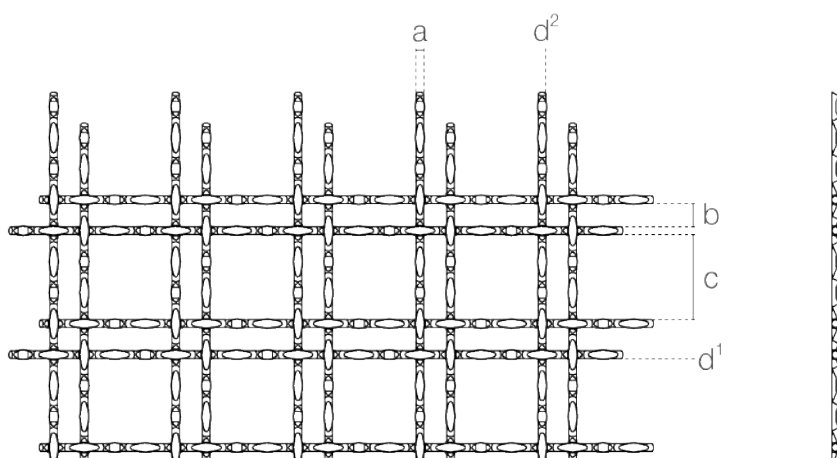
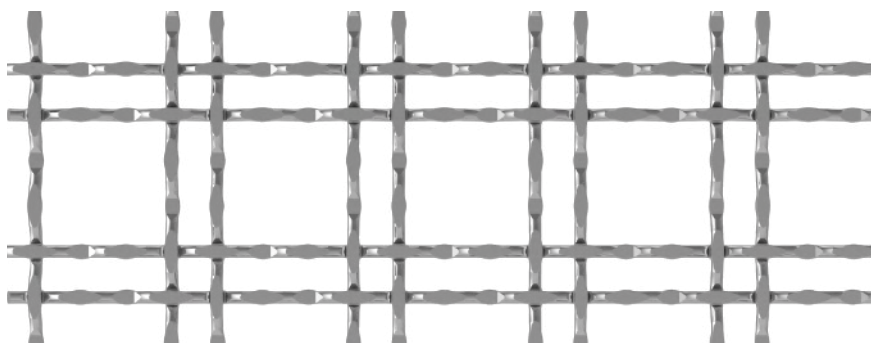
## SPACE

- Partition
- Safety & Security
- Ceiling
- Interior Design
- Furniture
- Wall Covering

## APPLICATIONS

- Hotel
- Shopping center
- Office
- Concert hall
- Restaurant
- Family
- Recreation center
- School
- Theater
- Library
- Hospital

**WEAVING INFINITE POSSIBILITIES**



## SPECIFICATION

<i>Material</i>	SS304/SS316
<i>Surface finish</i>	baking varnish and plating
<i>Round wire diameter (a)</i>	3 mm
<i>(b)</i>	8.7 × 8.7 mm
<i>(c)</i>	33 × 33 mm
<i>(d)</i>	8.7 mm (d¹) × 33 mm (d²)
<i>Open area</i>	72.2%
<i>Weight</i>	3.9 kg/m²
<i>Color</i>	Natural colors, bronze, antique brass and brass





**ARGGER**

**Muses 2528**

**Crimped**

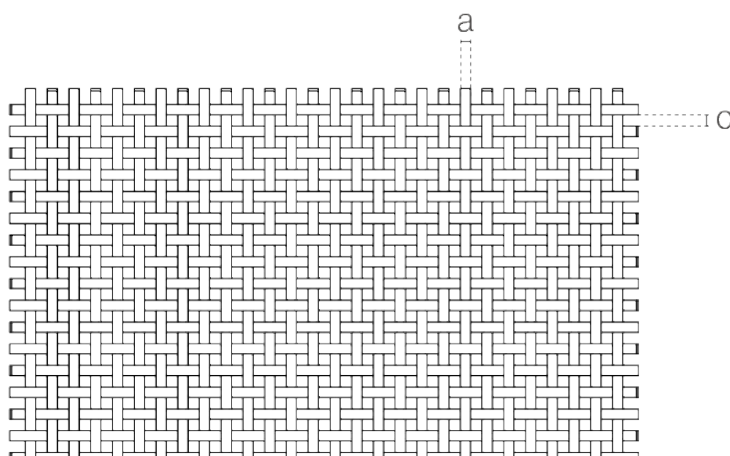
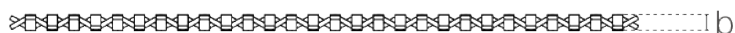
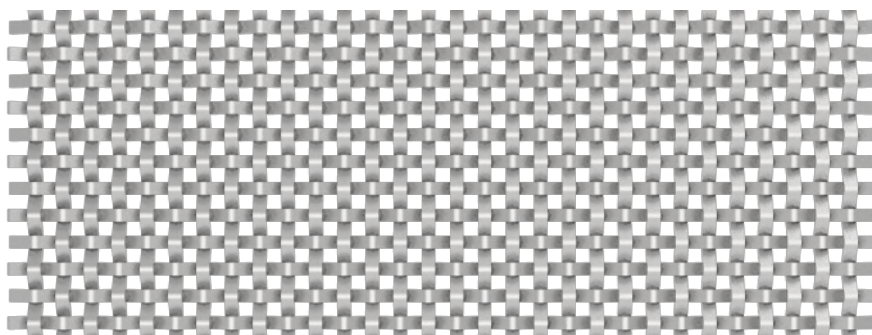
## SPACE

- Partition
- Safety & Security
- Ceiling
- Interior Design
- Furniture
- Wall Covering

## APPLICATIONS

- Hotel
- Shopping center
- Office
- Concert hall
- Restaurant
- Family
- Recreation center
- School
- Theater
- Library
- Hospital

**WEAVING INFINITE POSSIBILITIES**



## SPECIFICATION

<i>Material</i>	SS304/SS316
<i>Surface finish</i>	baking varnish and plating
<i>Flat wire width (a)</i>	2.5 mm
<i>Flat wire thickness (b)</i>	1.1 mm
<i>(c)</i>	2.8 mm
<i>Open area</i>	27.56%
<i>Weight</i>	9.2 kg/m <sup>2</sup>
<i>Color</i>	Natural colors, bronze, antique brass and brass





ARGGER

Muses 15R20D

Crimped

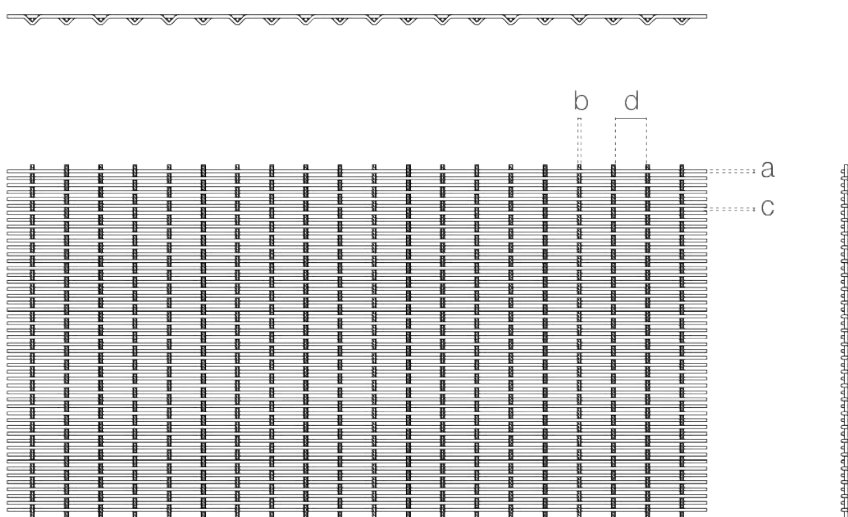
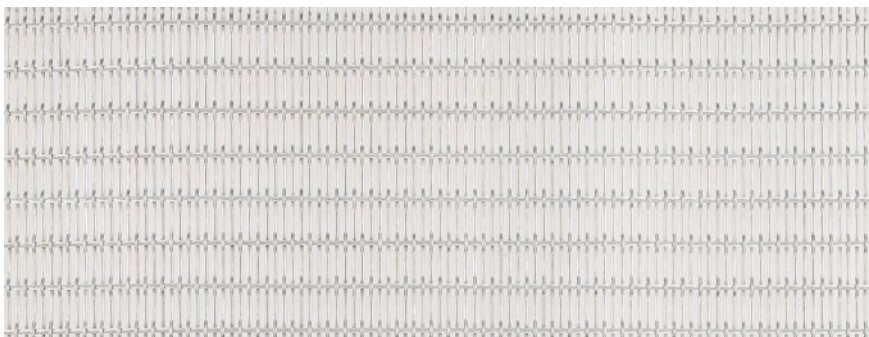
### SPACE

- Partition
- Safety & Security
- Ceiling
- Interior Design
- Furniture
- Wall Covering

### APPLICATIONS

- Hotel
- Shopping center
- Office
- Concert hall
- Restaurant
- Family
- Recreation center
- School
- Theater
- Library
- Hospital

WEAVING INFINITE POSSIBILITIES



### SPECIFICATION

Material	SS304/SS316
Surface finish	baking varnish and plating
Round wire diameter (a)	1.5 mm
Rope diameter (b)	2 mm
Round wire pitch (c)	2 mm
Rope pitch (d)	15.6 mm
Open area	49.6%
Weight	5.7 kg/m <sup>2</sup>
Color	Natural colors, bronze, antique brass and brass







**ARGGER**

*Muses 2140D*

**Crimped**

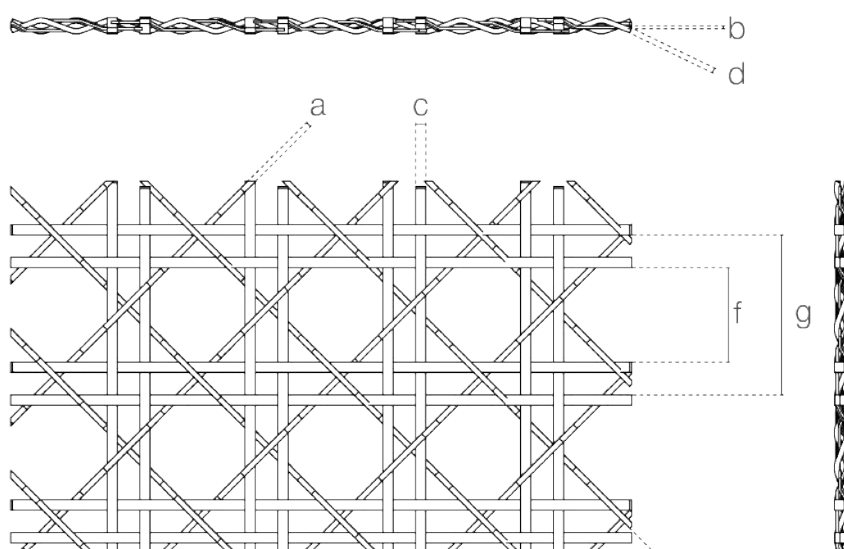
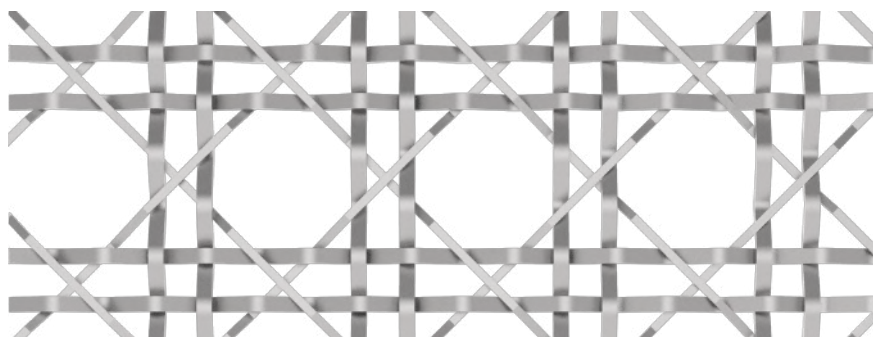
## SPACE

- Partition
- Safety & Security
- Interior Design
- Furniture
- Wall Covering

## APPLICATIONS

- Hotel
- Shopping center
- Office
- Concert hall
- Restaurant
- Family
- Recreation center
- School
- Theater
- Library
- Hospital

**WEAVING INFINITE POSSIBILITIES**



## SPECIFICATION

<i>Material</i>	SS304/SS316
<i>Surface finish</i>	baking varnish and plating
<i>(a)</i>	2.15 mm
<i>(b)</i>	1 mm
<i>(c)</i>	4 mm
<i>(d)</i>	2 mm
<i>(e)</i>	36.6 × 36.6 mm
<i>(f)</i>	36.6 × 36.6 mm
<i>(g)</i>	62 × 62 mm
<i>Open area</i>	63.36%
<i>Weight</i>	6.1 kg/m <sup>2</sup>
<i>Color</i>	Natural colors, bronze, antique brass and brass





**ARGGER**

**Muses 1120D**

**Crimped**

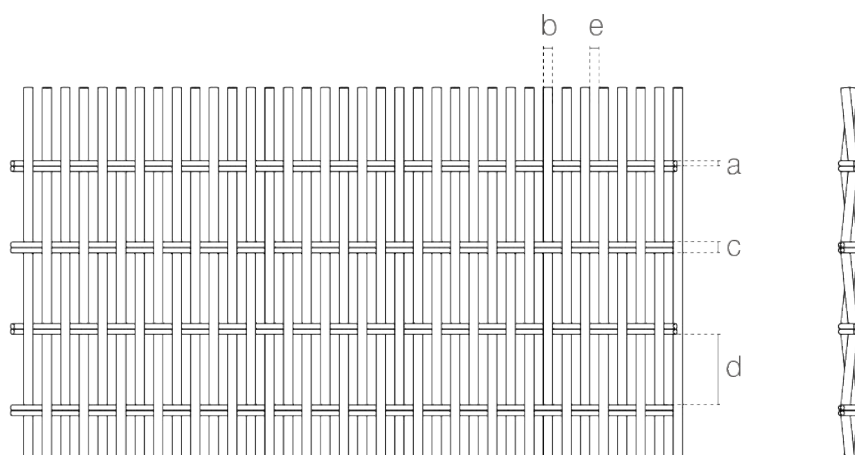
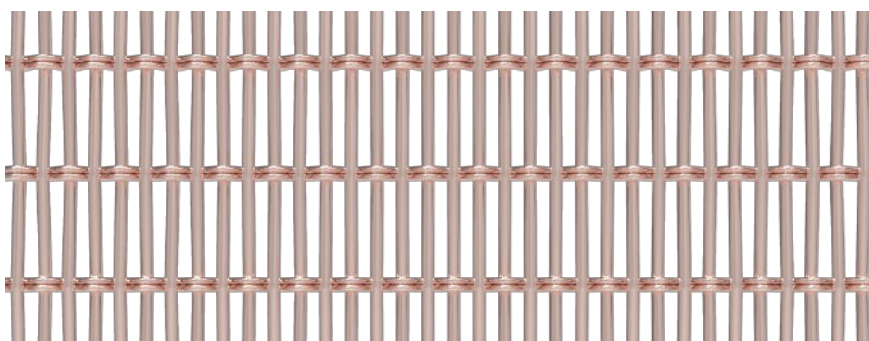
## SPACE

- Partition
- Safety & Security
- Ceiling
- Interior Design
- Furniture
- Wall Covering

## APPLICATIONS

- Hotel
- Shopping center
- Office
- Concert hall
- Restaurant
- Family
- Recreation center
- School
- Theater
- Library
- Hospital

**WEAVING INFINITE POSSIBILITIES**



## SPECIFICATION

<i>Material</i>	SS304/SS316
<i>Surface finish</i>	baking varnish and plating
<i>2-round-wire diameter (a)</i>	1.15 mm
<i>Cross rod diameter (b)</i>	2 mm
<i>2-round-wire overall width (c)</i>	2.3 mm
<i>2-round-wire pitch (d)</i>	15 mm
<i>Cross rod pitch (e)</i>	2 mm
<i>Open area</i>	43.1%
<i>Weight</i>	7.5 kg/m <sup>2</sup>
<i>Color</i>	Natural colors, bronze, antique brass and brass





**ARGGER**

**Muses 0388**

**Crimped**

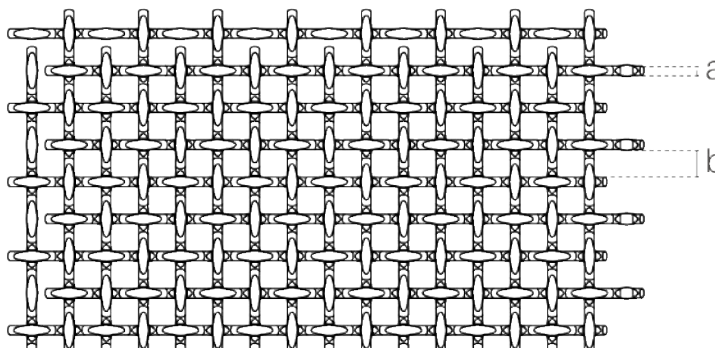
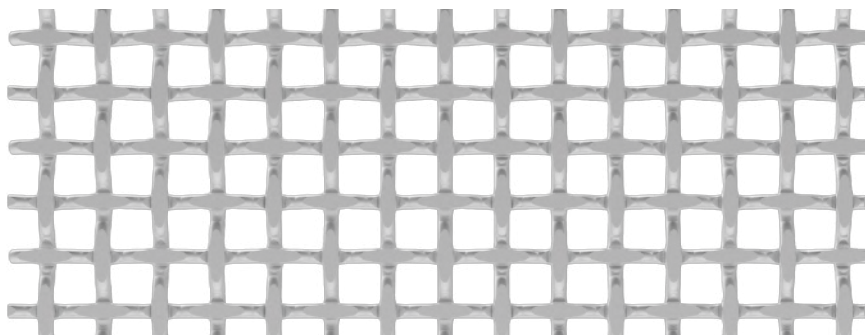
## SPACE

- Partition
- Ceiling
- Interior Design
- Furniture
- Wall Covering

## APPLICATIONS

- Hotel
- Shopping center
- Office
- Concert hall
- Restaurant
- Family
- Recreation center
- School
- Theater
- Library
- Hospital

**WEAVING INFINITE POSSIBILITIES**



## SPECIFICATION

<i>Material</i>	SS304/SS316
<i>Surface finish</i>	baking varnish and plating
<i>Wire diameter (a)</i>	3 mm
<i>Wire aperture (b)</i>	8.8 mm
<i>Open area</i>	53.3%
<i>Weight</i>	7.77 kg/m <sup>2</sup>
<i>Color</i>	Natural colors, bronze, antique brass and brass





**ARGGER**

*Muses 3865*

**Crimped**

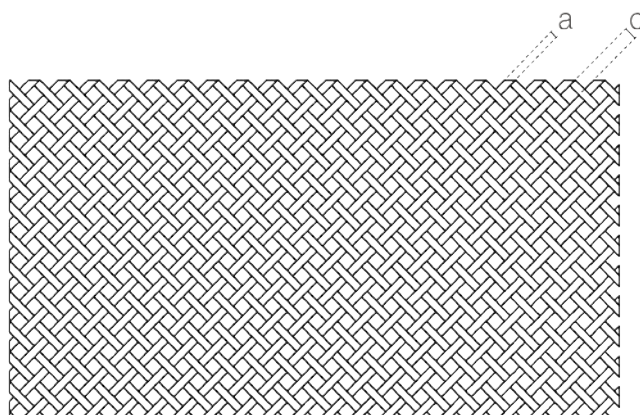
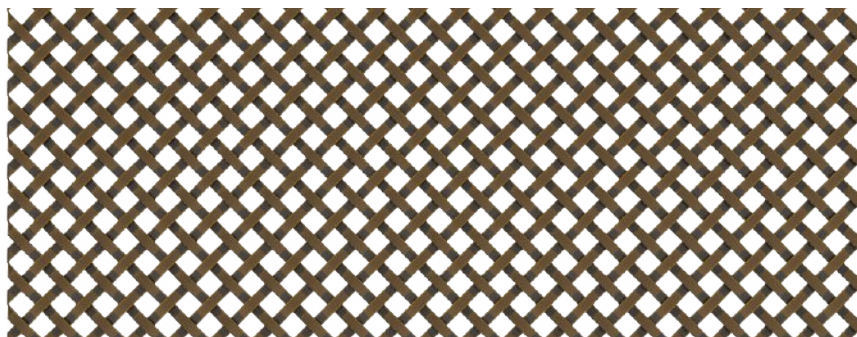
#### SPACE

- Partition
- Safety & Security
- Ceiling
- Interior Design
- Furniture
- Wall Covering


#### APPLICATIONS

- Hotel
- Shopping center
- Office
- Concert hall
- Restaurant
- Family
- Recreation center
- School
- Theater
- Library
- Hospital

**WEAVING INFINITE POSSIBILITIES**



#### SPECIFICATION

<i>Material</i>	SS304/SS316
<i>Surface finish</i>	baking varnish and plating
<i>Flat wire width (a)</i>	3.85 mm
<i>Flat wire thickness (b)</i>	1.05 mm
<i>Flat wire aperture (c)</i>	6.5 mm
<i>Open area</i>	32.82%
<i>Weight</i>	6.3 kg/m <sup>2</sup>
<i>Color</i>	Natural colors, bronze, antique brass and brass 







**ARGGER**

*Muses 1118D*

**Crimped**

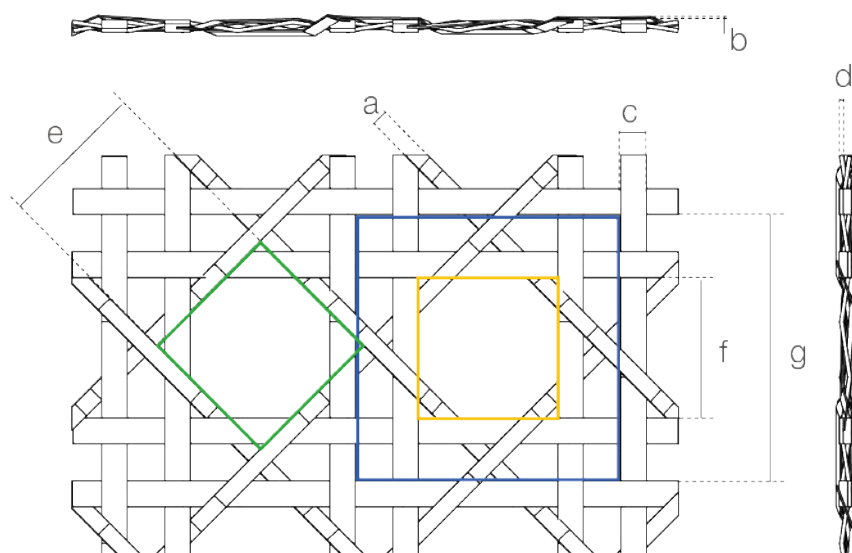
## SPACE

- Partition
- Safety & Security
- Interior Design
- Furniture
- Wall Covering

## APPLICATIONS

- Hotel
- Shopping center
- Office
- Concert hall
- Restaurant
- Family
- Recreation center
- School
- Theater
- Library
- Hospital

**WEAVING INFINITE POSSIBILITIES**



## SPECIFICATION

<i>Material</i>	SS304/SS316
<i>Surface finish</i>	baking varnish and plating
<i>(a)</i>	11.85 mm
<i>(b)</i>	1.2 mm
<i>(c)</i>	18.3 mm
<i>(d)</i>	2.8 mm
<i>(e)</i>	105 × 105 mm
<i>(f)</i>	100 × 100 mm
<i>(g)</i>	190 × 190 mm
<i>Open area</i>	46%
<i>Weight</i>	10.58 kg/m <sup>2</sup>
<i>Color</i>	Natural colors, bronze, antique brass and brass





**ARGGER**

**Muses 3230-S**

**Crimped**

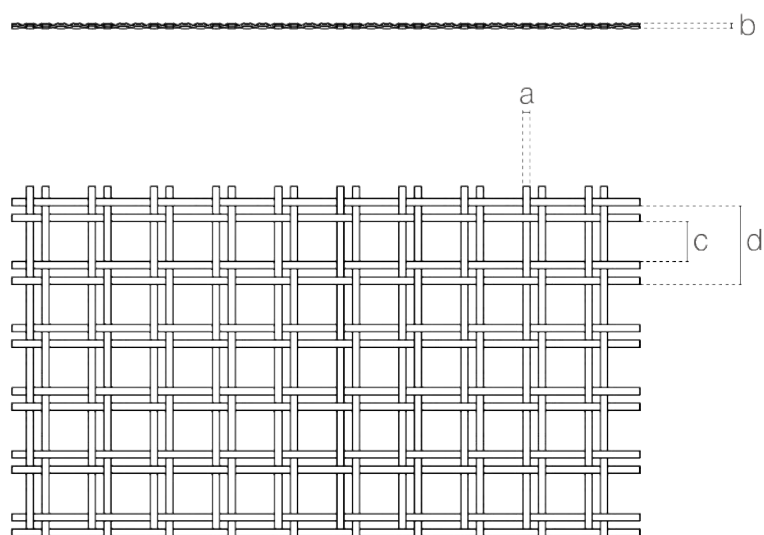
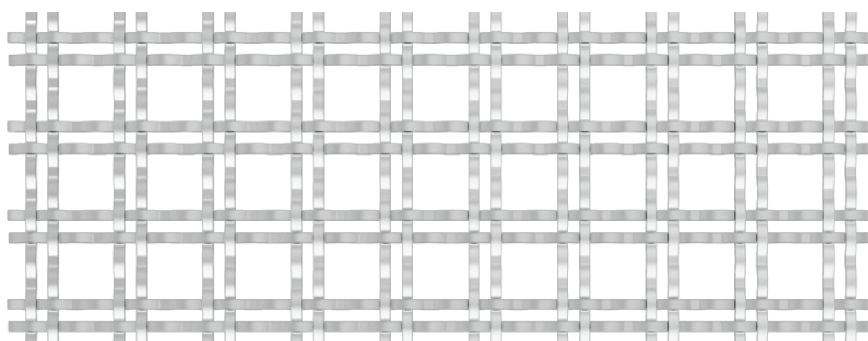
## SPACE

- Partition
- Safety & Security
- Ceiling
- Interior Design
- Furniture
- Wall Covering

## APPLICATIONS

- Hotel
- Shopping center
- Office
- Concert hall
- Restaurant
- Family
- Recreation center
- School
- Theater
- Library
- Hospital

**WEAVING INFINITE POSSIBILITIES**



## SPECIFICATION

<i>Material</i>	SS304/SS316
<i>Surface finish</i>	baking varnish and plating
<i>Flat wire width (a)</i>	3.2 mm
<i>Flat wire thickness (b)</i>	1 mm
<i>(c)</i>	16 × 16 mm
<i>(d)</i>	30 × 30 mm
<i>Open area</i>	55.4%
<i>Weight</i>	4.1 kg/m <sup>2</sup>
<i>Color</i>	Natural colors, bronze, antique brass and brass





ARGGER

Muses 3230-B

Crimped

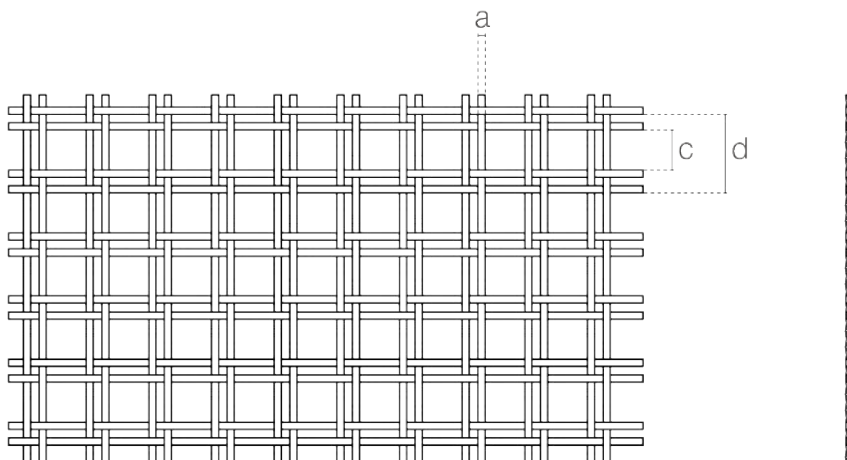
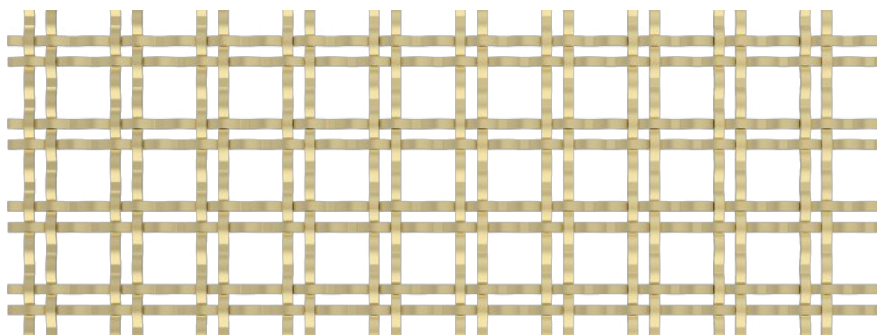
## SPACE

- Partition
- Safety & Security
- Ceiling
- Interior Design
- Furniture
- Wall Covering

## APPLICATIONS

- Hotel
- Shopping center
- Office
- Concert hall
- Restaurant
- Family
- Recreation center
- School
- Theater
- Library
- Hospital

WEAVING INFINITE POSSIBILITIES



## SPECIFICATION

Material	SS304/SS316
Surface finish	baking varnish and plating
Flat wire width (a)	3.2 mm
Flat wire thickness (b)	1 mm
(c)	16 × 16 mm
(d)	30 × 30 mm
Open area	55.4%
Weight	4.1 kg/m <sup>2</sup>
Color	Natural colors, bronze, antique brass and brass





**ARGGER**

**Muses 2420D**

**Crimped**

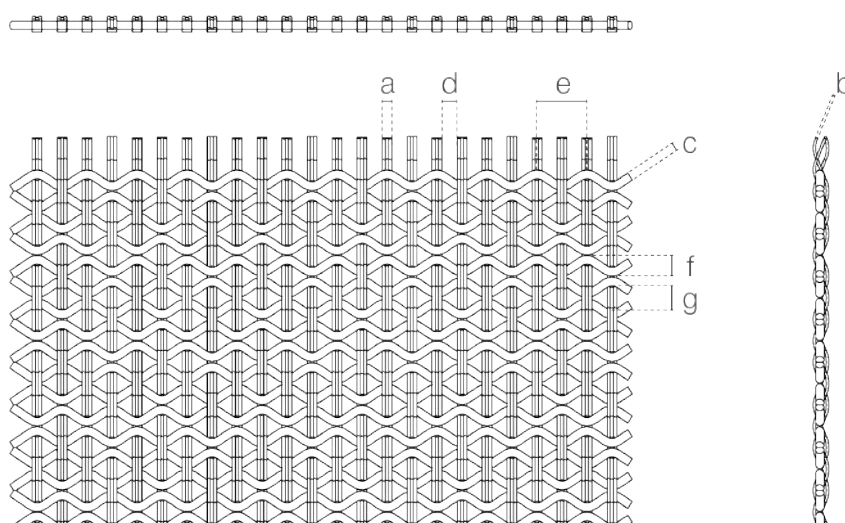
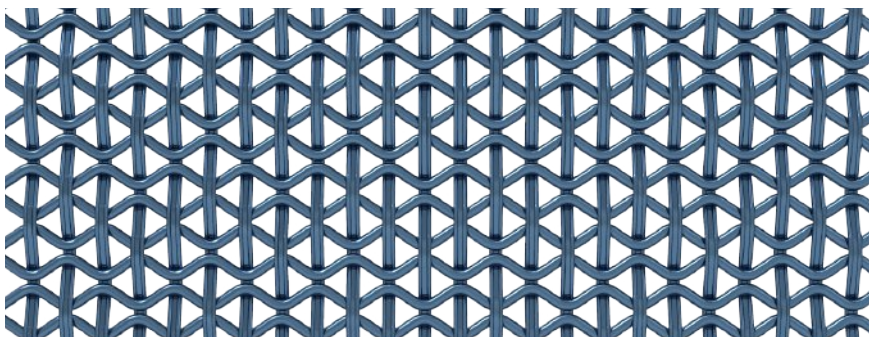
## SPACE

- Partition
- Safety & Security
- Ceiling
- Facade
- Interior Design
- Furniture
- Wall Covering

## APPLICATIONS

- Hotel
- Shopping center
- Office
- Concert hall
- Restaurant
- Family
- Recreation center
- School
- Theater
- Library
- Hospital

**WEAVING INFINITE POSSIBILITIES**



## SPECIFICATION

<i>Material</i>	SS304/SS316
<i>Surface finish</i>	baking varnish and plating
<i>Groove wire width (a)</i>	2.4 mm
<i>Groove wire thickness (b)</i>	1.25 mm
<i>Wavy round wire diameter (c)</i>	2 mm
<i>Groove wire pitch (d)</i>	3 mm
<i>Wavy round wire pitch (e)</i>	10.5 mm
<i>(f)</i>	3 mm
<i>(g)</i>	6 mm
<i>Open area</i>	31.4%
<i>Weight</i>	6.9 kg/m <sup>2</sup>
<i>Color</i>	Natural colors, bronze, antique brass and brass







**ARGGER**

**Muses 2419**

**Crimped**

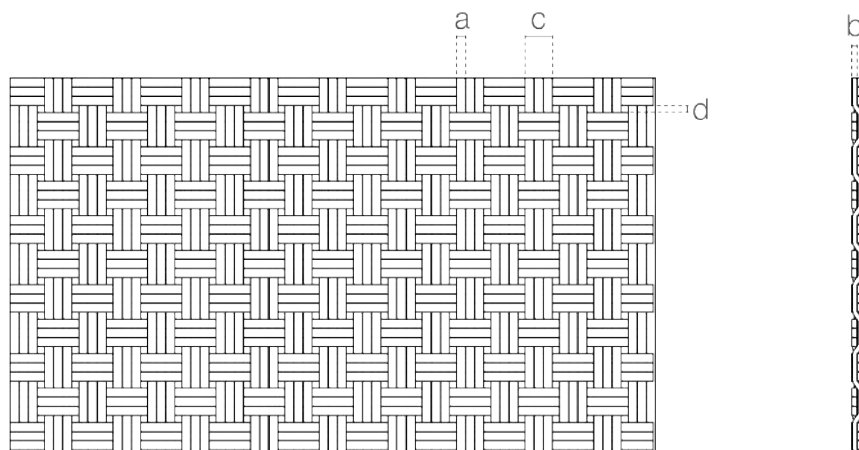
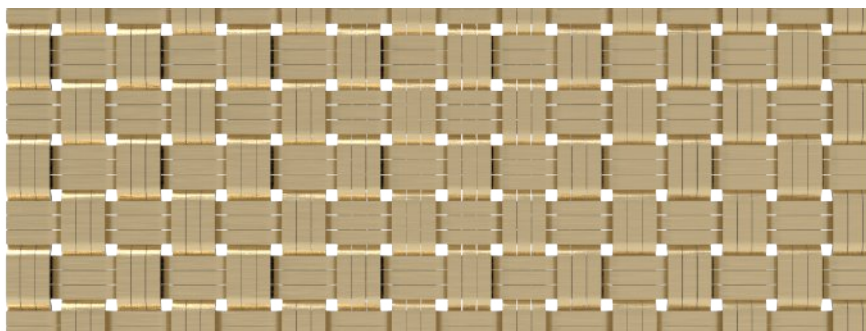
## SPACE

- Partition
- Safety & Security
- Ceiling
- Elevator Cab
- Interior Design
- Furniture
- Wall Covering

## APPLICATIONS

- Hotel
- Shopping center
- Office
- Concert hall
- Restaurant
- Family
- Recreation center
- School
- Theater
- Library
- Hospital

**WEAVING INFINITE POSSIBILITIES**



## SPECIFICATION

<i>Material</i>	SS304/SS316
<i>Surface finish</i>	baking varnish and plating
<i>Flat wire width (a)</i>	2.4 mm
<i>Flat wire thickness (b)</i>	1.3 mm
<i>3-flat-wire overall width (c)</i>	7.4 mm
<i>3-flat-wire pitch (d)</i>	1.9 mm
<i>Weight</i>	16.4 kg/m <sup>2</sup>
<i>Color</i>	Natural colors, bronze, antique brass and brass 





**ARGGER**

**Muses 4910D**

**Crimped**

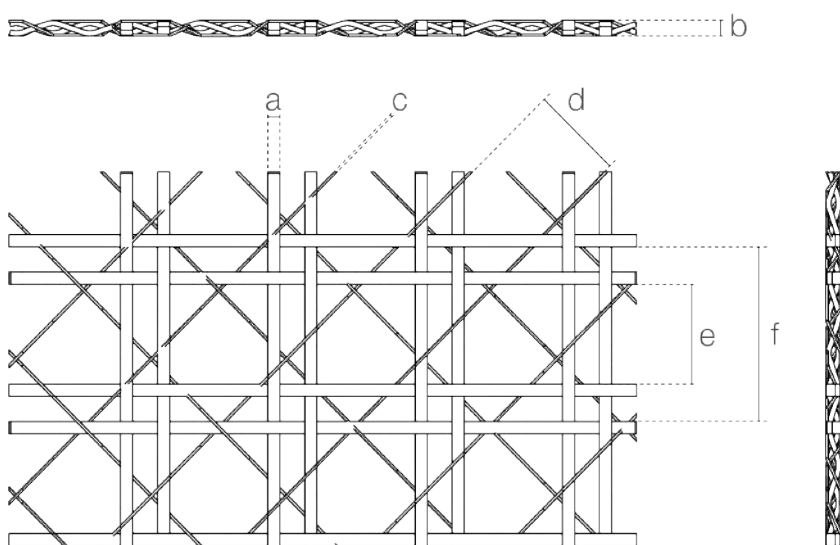
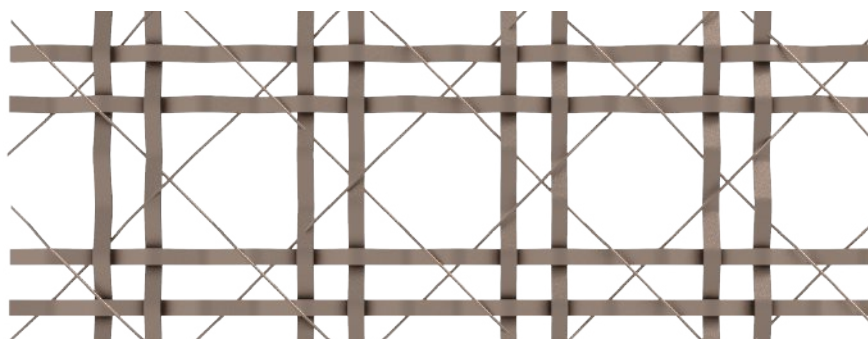
## SPACE

- Partition
- Interior Design
- Furniture
- Wall Covering

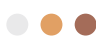
## APPLICATIONS

- Hotel
- Shopping center
- Office
- Concert hall
- Restaurant
- Family
- Recreation center
- School
- Theater
- Library
- Hospital

**WEAVING INFINITE POSSIBILITIES**



## SPECIFICATION

<i>Material</i>	SS304/SS316
<i>Surface finish</i>	baking varnish and plating
<i>Flat wire width (a)</i>	4.9 mm
<i>Flat wire thickness (b)</i>	2 mm
<i>Round wire diameter (c)</i>	1 mm
<i>Round wire aperture (d)</i>	40 mm
<i>(e)</i>	40 × 40 mm
<i>(f)</i>	70 × 70 mm
<i>Open area</i>	66.97%
<i>Weight</i>	5.775 kg/m <sup>2</sup>
<i>Color</i>	Natural colors, bronze, antique brass and brass 





ARGGER

Muses 6853

Crimped

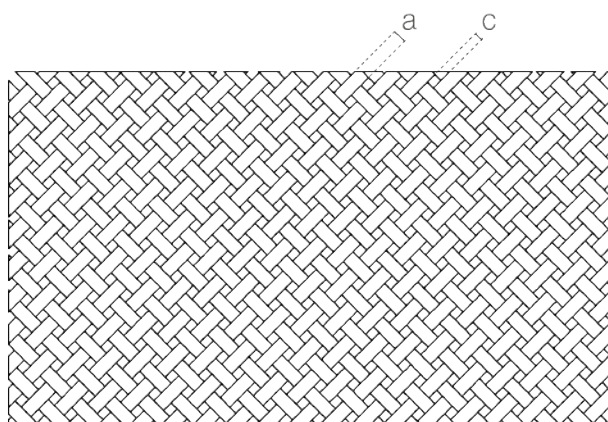
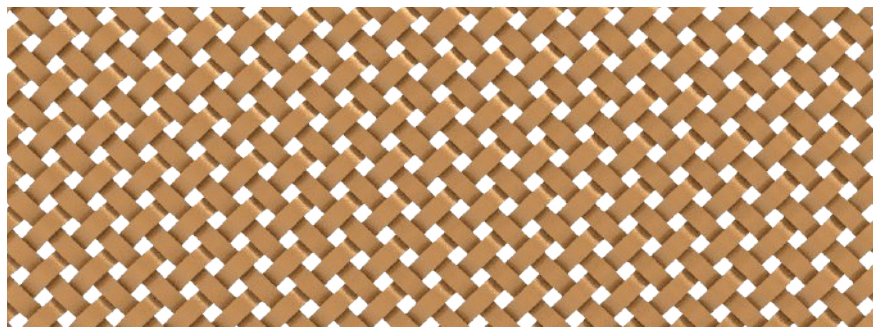
### SPACE

- Partition
- Safety & Security
- Ceiling
- Interior Design
- Furniture
- Wall Covering

### APPLICATIONS

- Hotel
- Shopping center
- Office
- Concert hall
- Restaurant
- Family
- Recreation center
- School
- Theater
- Library
- Hospital

WEAVING INFINITE POSSIBILITIES



### SPECIFICATION

Material	SS304/SS316
Surface finish	baking varnish and plating
Flat wire width (a)	6.8 mm
Flat wire thickness (b)	1.35 mm
Flat wire aperture (c)	5.3 × 5.3 mm
Open area	20.8%
Weight	12.875 kg/m <sup>2</sup>
Color	Natural colors, bronze, antique brass and brass





**ARGGER**

*Muses 2416D*

**Crimped**

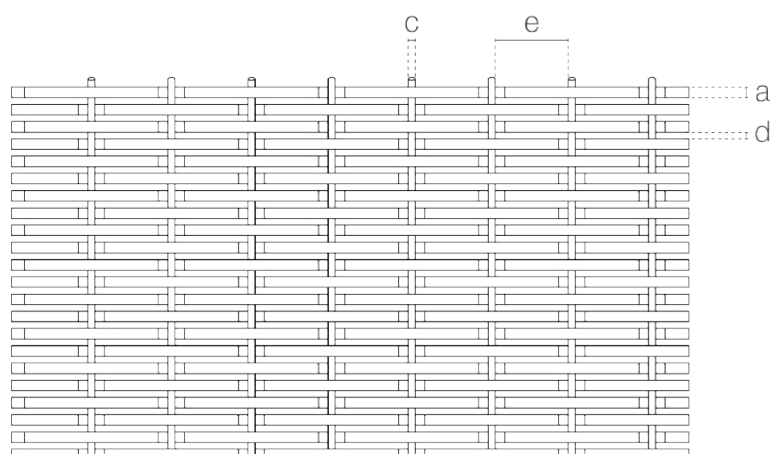
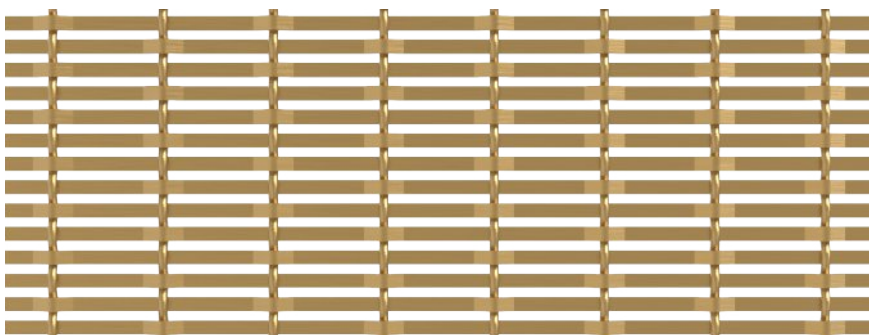
## SPACE

- Partition
- Safety & Security
- Ceiling
- Interior Design
- Furniture
- Wall Covering

## APPLICATIONS

- Hotel
- Shopping center
- Office
- Concert hall
- Restaurant
- Family
- Recreation center
- School
- Theater
- Library
- Hospital

**WEAVING INFINITE POSSIBILITIES**



## SPECIFICATION

<i>Material</i>	SS304/SS316
<i>Surface finish</i>	baking varnish and plating
<i>Flat wire width (a)</i>	2.4 mm
<i>Flat wire thickness (b)</i>	1.4 mm
<i>Round Wire diameter (c)</i>	1.6 mm
<i>Flat wire pitch (d)</i>	1.5 mm
<i>Round wire pitch (e)</i>	16 mm
<i>Open area</i>	36.16%
<i>Weight</i>	7.9 kg/m <sup>2</sup>
<i>Color</i>	Natural colors, bronze, antique brass and brass







ARGGER

Muses 1963-C

Crimped

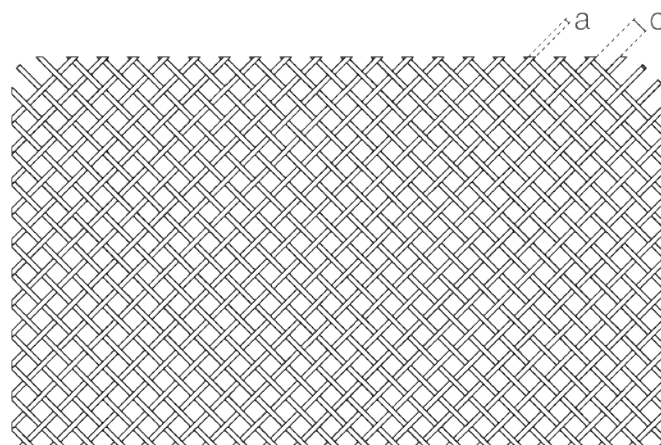
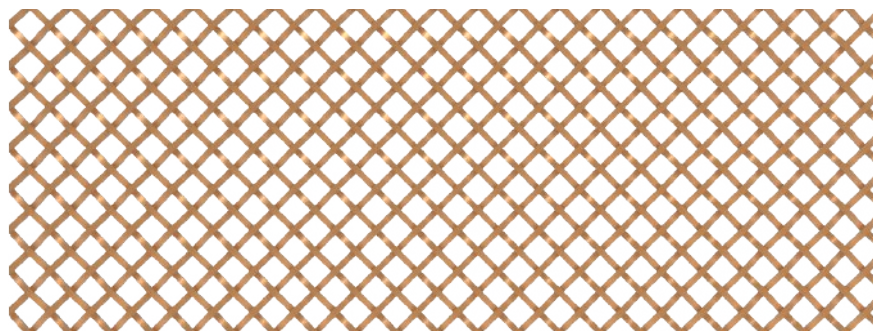
## SPACE

- Partition
- Safety & Security
- Ceiling
- Interior Design
- Furniture
- Wall Covering

## APPLICATIONS

- Hotel
- Shopping center
- Office
- Concert hall
- Restaurant
- Family
- Recreation center
- School
- Theater
- Library
- Hospital

WEAVING INFINITE POSSIBILITIES



## SPECIFICATION

Material	SS304/SS316
Surface finish	baking varnish and plating
Flat wire width (a)	1.9 mm
Flat wire thickness (b)	1.8 mm
Flat wire aperture (c)	6.3 × 6.3 mm
Open area	59.6%
Weight	6.6 kg/m <sup>2</sup>
Color	Natural colors, bronze, antique brass and brass





**ARGGER**

*Muses 1963-B*

**Crimped**

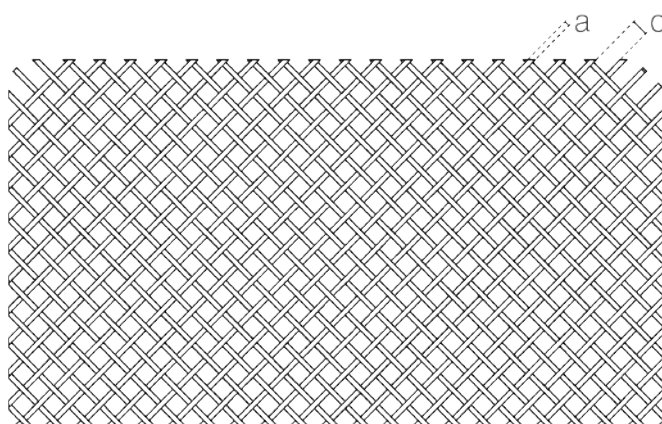
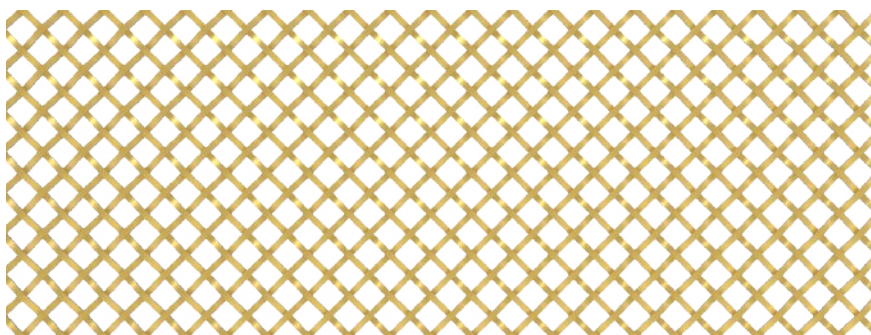
## SPACE

- Partition
- Safety & Security
- Ceiling
- Interior Design
- Furniture
- Wall Covering




## APPLICATIONS

- Hotel
- Shopping center
- Office
- Concert hall
- Restaurant
- Family
- Recreation center
- School
- Theater
- Library
- Hospital

**WEAVING INFINITE POSSIBILITIES**



## SPECIFICATION

<i>Material</i>	SS304/SS316
<i>Surface finish</i>	baking varnish and plating
<i>Flat wire width (a)</i>	1.9 mm
<i>Flat wire thickness (b)</i>	1.8 mm
<i>Round Wire diameter (c)</i>	6.3 × 6.3 mm
<i>Open area</i>	59.6%
<i>Weight</i>	6.6 kg/m <sup>2</sup>
<i>Color</i>	Natural colors, bronze,    antique brass and brass





ARGGER

Muses 3060

Crimped

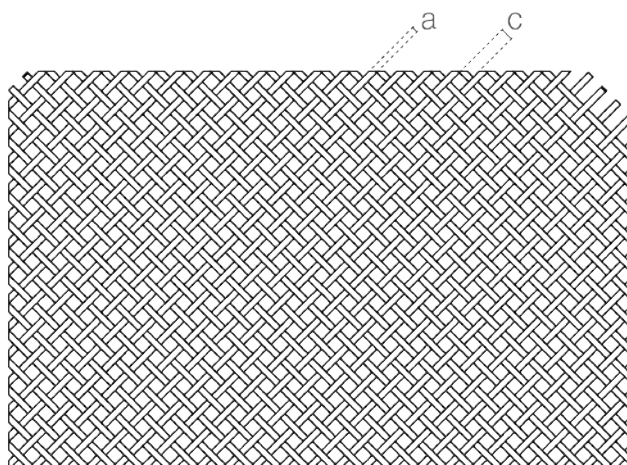
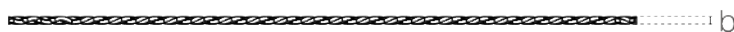
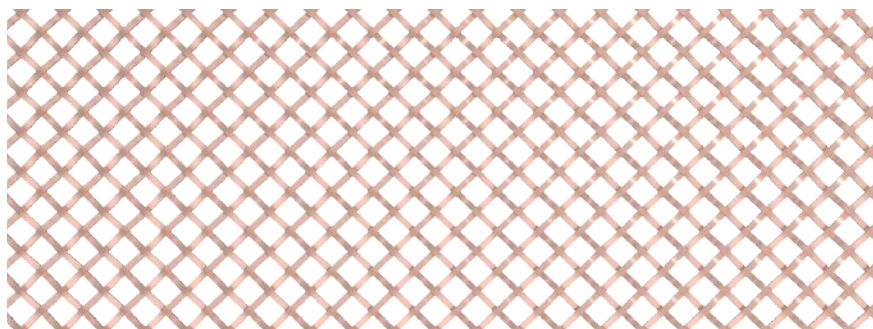
### SPACE

- Partition
- Safety & Security
- Ceiling
- Interior Design
- Furniture
- Wall Covering

### APPLICATIONS

- Hotel
- Shopping center
- Office
- Concert hall
- Restaurant
- Family
- Recreation center
- School
- Theater
- Library
- Hospital

WEAVING INFINITE POSSIBILITIES



### SPECIFICATION

Material	SS304/SS316
Surface finish	baking varnish and plating
Flat wire width (a)	3 mm
Flat wire thickness (b)	1.7 mm
Flat wire aperture (c)	6 mm
Open area	44.89%
Weight	8.9 kg/m <sup>2</sup>
Color	Natural colors, bronze, antique brass and brass





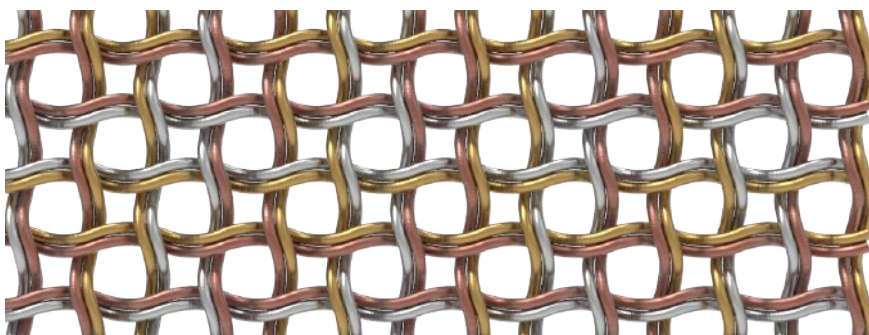


**ARGGER**

*Muses 2817*

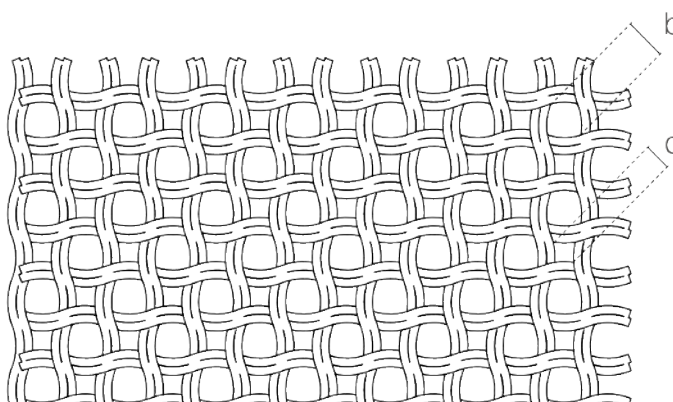
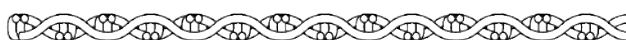
**Crimped**

WEAVING INFINITE POSSIBILITIES



## SPACE

- Partition
- Safety & Security
- Ceiling
- Facade
- Interior Design
- Furniture
- Wall Covering



## APPLICATIONS

- Hotel
- Shopping center
- Office
- Concert hall
- Restaurant
- Family
- Recreation center
- School
- Theater
- Library
- Hospital

## SPECIFICATION

<i>Material</i>	SS304/SS316
<i>Surface finish</i>	baking varnish and plating
<i>Wire diameter (a)</i>	2.8 mm
<i>(b)</i>	17 mm
<i>(c)</i>	10 mm
<i>Open area</i>	58.2%
<i>Weight</i>	14.5 kg/m <sup>2</sup>
<i>Color</i>	Natural colors, bronze, antique brass and brass







**ARGGER**

*Muses 3038D*

**Crimped**

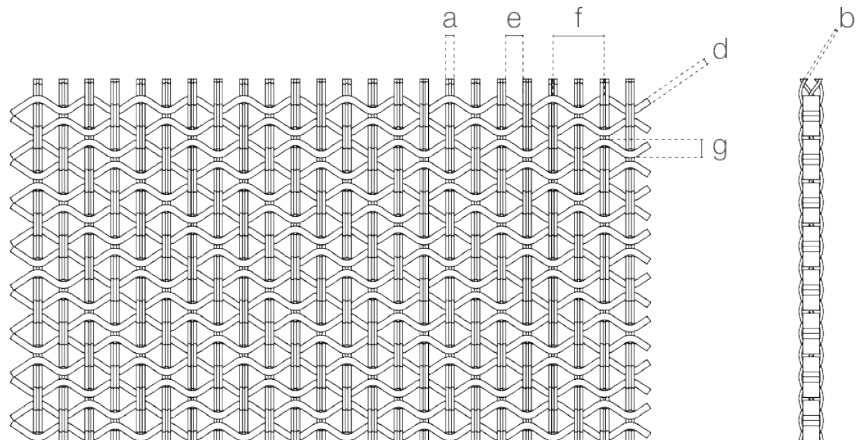
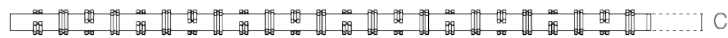
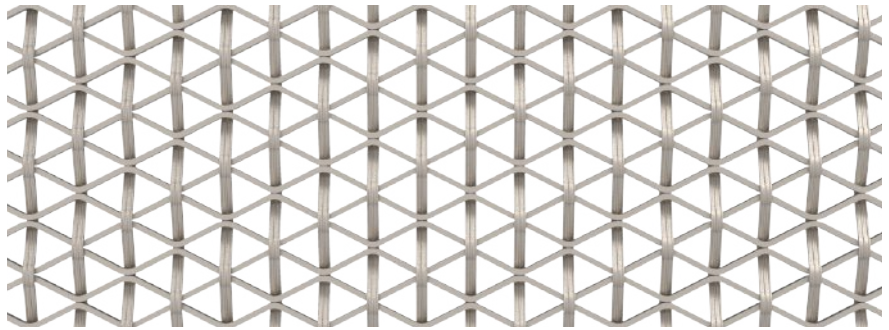
## SPACE

- Partition
- Safety & Security
- Ceiling
- Interior Design
- Furniture
- Wall Covering

## APPLICATIONS

- Hotel
- Shopping center
- Office
- Concert hall
- Restaurant
- Family
- Recreation center
- School
- Theater
- Library
- Hospital

**WEAVING INFINITE POSSIBILITIES**



## SPECIFICATION

<i>Material</i>	SS304/SS316
<i>Surface finish</i>	baking varnish and plating
<i>Groove wire width (a)</i>	3 mm
<i>Groove wire thickness (b)</i>	1 mm
<i>Flat wire width (c)</i>	3.8 mm
<i>Flat wire thickness (d)</i>	1.5 mm
<i>Groove wire pitch (e)</i>	8.9 mm
<i>(f)</i>	24 mm
<i>(g)</i>	6 mm
<i>Open area</i>	41.4%
<i>Weight</i>	11.5 kg/m <sup>2</sup>
<i>Color</i>	Natural colors, bronze, antique brass and brass





**ARGGER**

**Muses 4920D**

**Crimped**

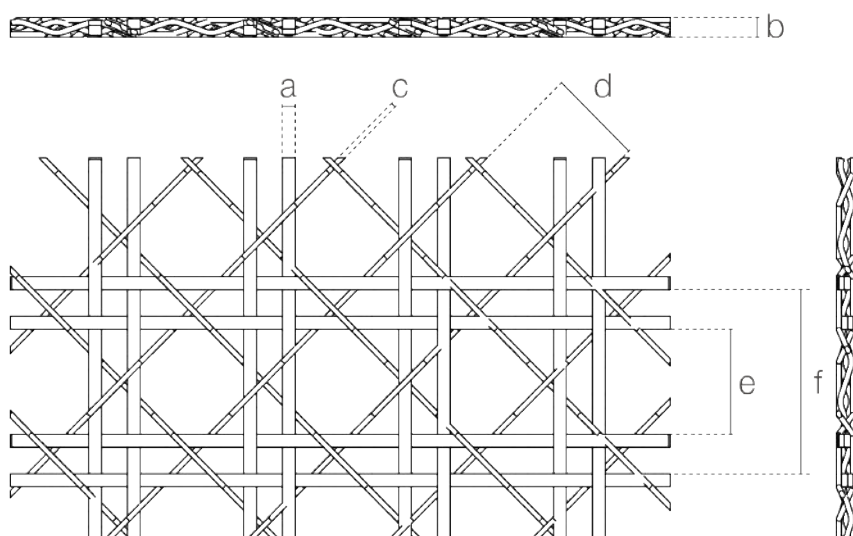
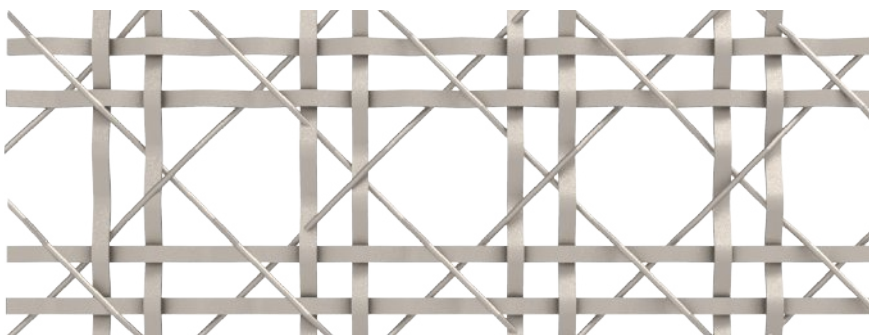
## SPACE

- Ceiling
- Interior Design
- Furniture
- Wall Covering

## APPLICATIONS

- Hotel
- Shopping center
- Office
- Concert hall
- Restaurant
- Family
- Recreation center
- School
- Theater
- Library
- Hospital

**WEAVING INFINITE POSSIBILITIES**



## SPECIFICATION

<i>Material</i>	SS304/SS316
<i>Surface finish</i>	baking varnish and plating
<i>Flat wire width (a)</i>	4.94 mm
<i>Flat wire thickness (b)</i>	2.1 mm
<i>Rope diameter (c)</i>	2 mm
<i>(d)</i>	38.8 × 38.8 mm
<i>(e)</i>	40 × 40 mm
<i>(f)</i>	70 × 70 mm
<i>Open area</i>	61.65%
<i>Weight</i>	7.125 kg/m <sup>2</sup>
<i>Color</i>	Natural colors, bronze, antique brass and brass





# APPLICATION



Facade

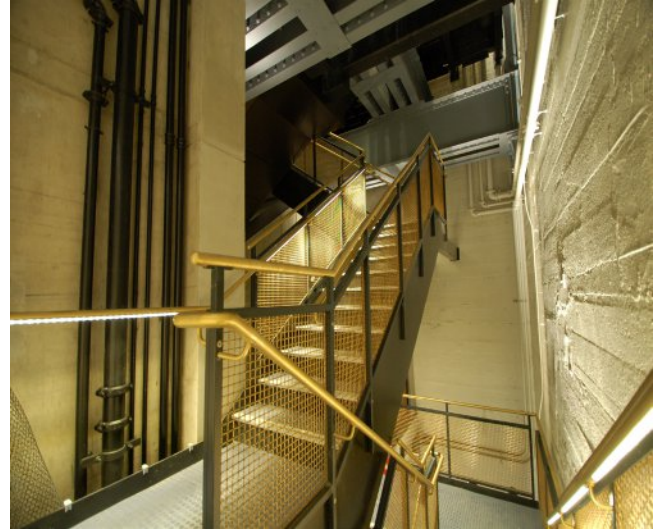


Ceiling





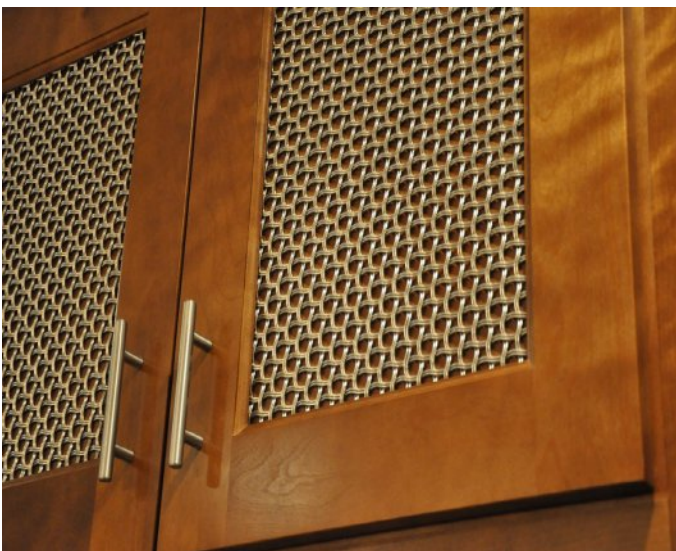
*Wall Covering*



*Safety & Security*



*Partition*



*Furniture*



*Interior Design*





*Partition*



*Safety & Security*



# ARGGER MUSES

---



ARGGER

ARGGER CREATIVE WEAVE CO., LTD.



## ADDRESS

Intersection of Weier Road and Jingsan Road, High-tech  
Industrial Zone, Anping, Hengshui, Hebei, China. 053600

## MOBILE

WeChat/WhatsApp: +86-18931825899  
Skype: sales.boegger

## NETWORK

<https://www.argger.com>  
E-mail: [support@argger.com](mailto:support@argger.com)