

M=1:1

Muses 6853

On this data sheet you find any information with regard to our standard meshes.
If you have further questions, please do not hesitate to contact us.



ARGGER



ARGGER

Muses 6853

Crimped

SPACE

- Partition
- Safety & Security
- Ceiling
- Facade
- Interior Design
- Furniture
- Wall Covering

APPLICATIONS

- Hotel
- Shopping center
- Office
- Concert hall
- Restaurant
- Family
- Recreation center
- School
- Theater
- Library
- Hospital

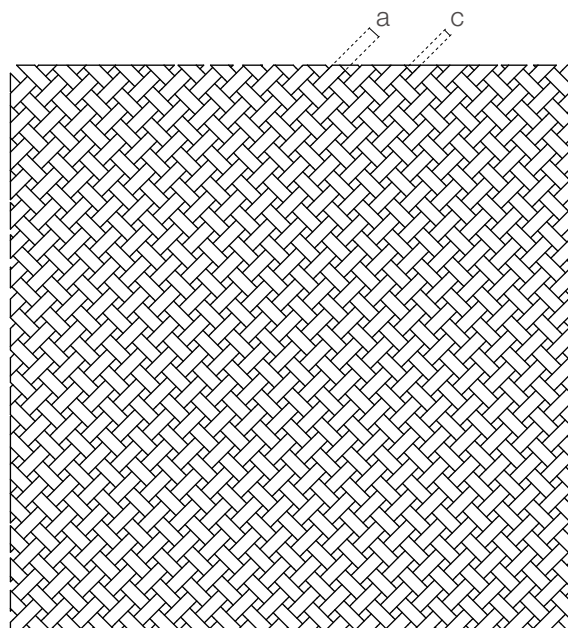
WEAVING INFINITE POSSIBILITIES

MUSES-6853

Muses-6853 architectural mesh is a classic crimping method. This wide flat wire is very strong and can be used in applications that require strength, such as railings and room dividers.

SPECIFICATION

| | |
|-------------------------|---|
| Material | SS304/SS316 |
| Surface finish | Baking varnish and plating |
| Flat wire width (a) | 6.8 mm |
| Flat wire thickness (b) | 1.35 mm |
| Flat wire aperture (c) | 5.3 mm (c ¹) × 5.3 mm (c ²) |
| Open area | 20.8% |
| Weight | 12.875 kg/m ² |
| Color | Natural colors, bronze, antique brass and brass |



Architectural Art Metal Meshes Solution Designer



Argger Creative Weave Co., Ltd.

www.argger.com / support@argger.com / (86)-318-5111380