

M=1:1

Muses 3865

On this data sheet you find any information with regard to our standard meshes.
If you have further questions, please do not hesitate to contact us.



ARGGER



ARGGER

Muses 3865

Crimped

SPACE

- Partition
- Safety & Security
- Ceiling
- Interior Design
- Furniture
- Wall Covering

APPLICATIONS

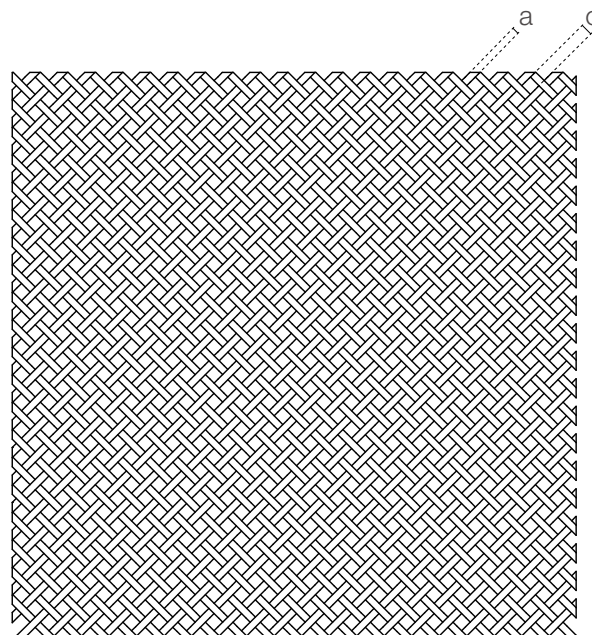
- Hotel
- Shopping center
- Office
- Concert hall
- Restaurant
- Family
- Recreation center
- School
- Theater
- Library
- Hospital

MUSES-3865

Muses-3865 is woven from stainless steel flat wire with antique brass treatment on the surface, giving it a sense of age and retro style. It is loved by artists and architects and is widely used in interior decoration such as safety guardrails, partitions, cabinet furniture, etc.

SPECIFICATION

<i>Material</i>	SS304/SS316
<i>Surface finish</i>	Baking varnish and plating
<i>Flat wire width (a)</i>	3.85 mm
<i>Flat wire thickness (b)</i>	1.05 mm
<i>Flat wire aperture (c)</i>	6.5 mm
<i>Open area</i>	32.82%
<i>Weight</i>	6.3 kg/m ²
<i>Color</i>	Natural colors, bronze, antique brass and brass



Architectural Art Metal Meshes Solution Designer



Argger Creative Weave Co., Ltd.

www.argger.com / support@argger.com / (86)-318-5111380