

M=1:1

Muses 2419

On this data sheet you find any information with regard to our standard meshes.
If you have further questions, please do not hesitate to contact us.



ARGGER



ARGGER

Muses 2419

Crimped

SPACE

- Partition
- Safety & Security
- Ceiling
- Facade
- Interior Design
- Furniture
- Wall Covering

APPLICATIONS

- Hotel
- Shopping center
- Office
- Concert hall
- Restaurant
- Family
- Recreation center
- School
- Theater
- Library
- Hospital

WEAVING INFINITE POSSIBILITIES

MUSES-2419

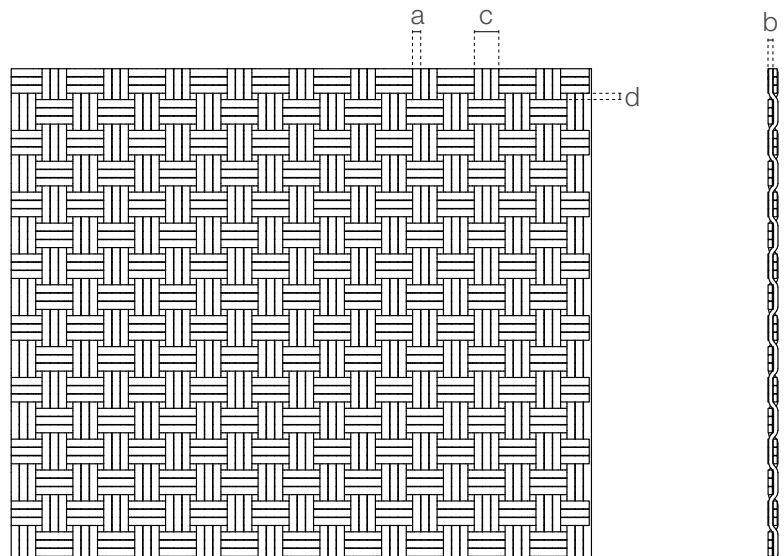
Muses-2419 consists of three separate stainless steel flat wires to form the appearance of a flat belt.

This brass-colored surface can give full play to its texture.

It has a low opening rate and is very suitable for cladding installation, such as decorative wall panels and elevator room wall panels. In addition, it is also suitable for partitions, guardrails and ceilings.

SPECIFICATION

Material	SS304/SS316
Surface finish	Baking varnish and plating
Flat wire width (a)	2.4 mm
Flat wire thickness (b)	1.3 mm
3-flat-wire overall width (c)	7.4 mm
3-flat-wire pitch (d)	1.9 mm
Weight	16.4 kg/m ²
Color	Natural colors, bronze, antique brass and brass



Architectural Art Metal Meshes Solution Designer



Argger Creative Weave Co., Ltd.

www.argger.com / support@argger.com / (86)-318-5111380