

M=1:1

Muses 2236

On this data sheet you find any information with regard to our standard meshes.
If you have further questions, please do not hesitate to contact us.



ARGGER



ARGGER

Muses 2236

Crimped

SPACE

- Partition
- Safety & Security
- Ceiling
- Facade
- Interior Design
- Furniture
- Wall Covering

APPLICATIONS

- Hotel
- Shopping center
- Office
- Concert hall
- Restaurant
- Family
- Recreation center
- School
- Theater
- Library
- Hospital

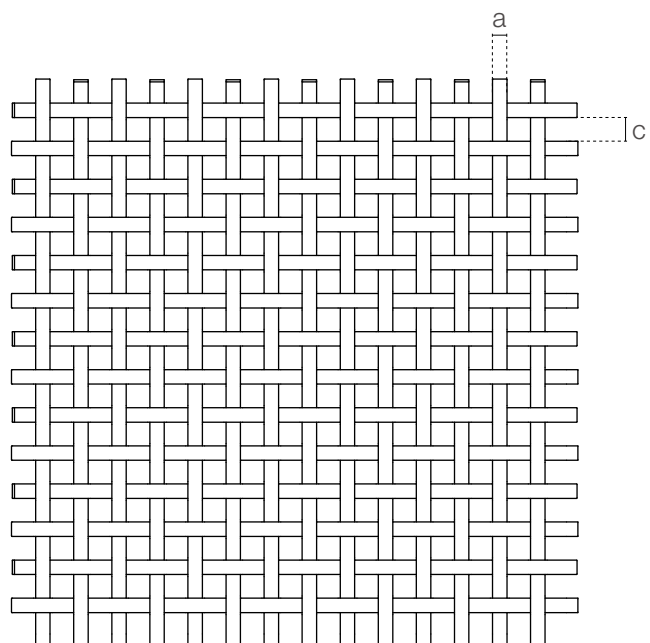
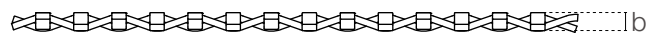
WEAVING INFINITE POSSIBILITIES

MUSES-2236

Muses-2236 is a simple flat woven wire mesh pattern. The smooth and soft shapes of the wires are woven into each other to form a rigid grid. Using a flat wire instead of a traditional round wire under this spacing can provide a grid with a lower percentage of open area, which is widely used.

SPECIFICATION

Material	SS304/SS316
Surface finish	Baking varnish and plating
Flat wire width (a)	2.2 mm
Flat wire thickness (b)	1 mm
Aperture (c)	3.6 mm × 3.6 mm
Open area	37.3%
Weight	5.86 kg/m ²
Color	Natural colors, bronze, antique brass and brass



Architectural Art Metal Meshes Solution Designer



Argger Creative Weave Co., Ltd.

www.argger.com / support@argger.com / (86)-318-5111380